



OWNER'S MANUAL

TRANSMISSION JACK
Operation maintenance

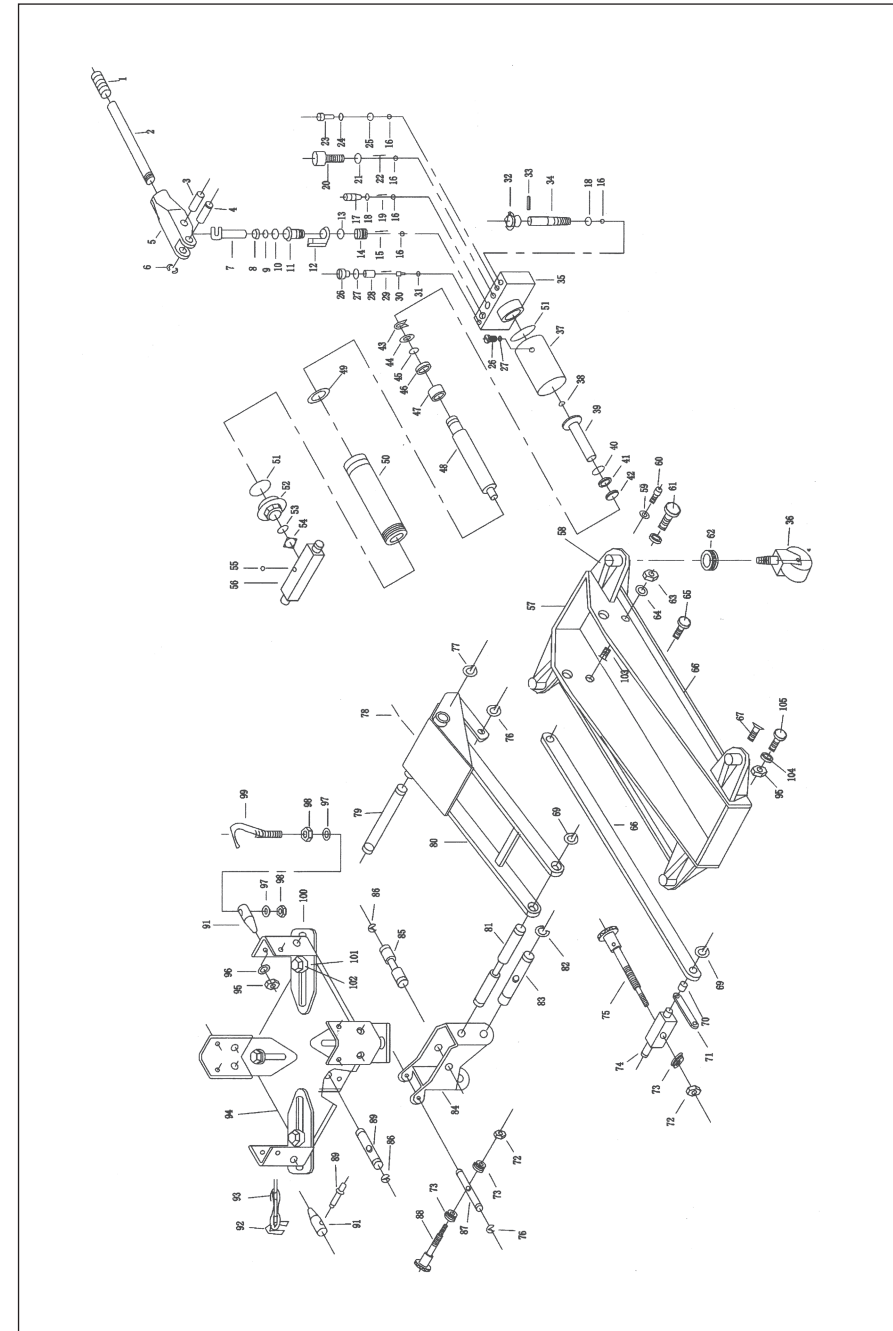


Caution:
Before use, Always read Instructions and Procedures carefully for safe operation.



WARNING!

- Read and understand all operating instructions before use.
- The vehicle must be properly supported and blocked before starting repairs.
- Use a transmission jack of the proper size and capacity to handle the anticipated load. This jack is rated for a maximum load of 1000kgs. Do not overload beyond the jack's rated capacity. Overloading may cause damage to or failure of the jack.
- Keep hands, fingers, and arms away from moving parts of the jack at all times.
- Secure the load with the safety chain before lowering or moving the load.
- Lower the load slowly and avoid sudden starts or stops that may cause the load to shift.
- This jack is designed for use on hard, level surfaces capable of sustaining the load. Use on other than hard, level surfaces can result in jack instability and possible loss of load.
- Do not use the transmission jack if under the influence of alcohol or drugs.
- This transmission jack is designed and intended for use by properly trained and experienced personnel only. If you are not familiar with the proper and safe operation of a transmission jack, do not use until proper training and knowledge have been obtained.
- The use of this jack is limited to the removal, installation, and transportation in the lowered position, of transmission and differentials.
- Failure to comply with all of these warnings may cause loss of load, damage to the jack, and/or failure of the jack resulting in serious injury and/or property damage.



Index No.	Description	QTY	Index No.	Description	QTY
29	Spring	1	82	Retain ring	2
30	Ball Seat	1	83	Axle	1
31	Ball4	1	84	Saddle Base	1
32	Knob	1	85	Axle	1
33	Pin	1	86	Snap Ring	4
34	Realease Rod	1	87	Axle	1
35	Valve Block	1	88	Screw	1
36	Caster Assembly	4	89	Axle	1
37	reservoir	1	90	Chain Connector	2
38	O-Ring	1	91	Hook Guide	4
39	Ram	1	92	Chain Connector	2
40	Retaining Ring	1	93	Chain	2
41	O-Ring	1	94	Saddle	1
42	Y-Ring	1	95	Nut	10
43	Retaining Ring	1	96	Washer	4
44	Washer	1	97	Washer	8
45	O-Ring	1	98	Nut	8
46	O-Ring Retaining	1	99	Chain Hook	1
47	Bush	1	100	Containing Angle	4
48	Piston Rod	1	101	Washer	4
49	O-Ring	1	102	Screw	4
50	Cylinder	1	103	Pin	2
51	Seal Ring	2	104	Lock Washer	12
52	Cylinder Nut	1	105	Screw	6
53	O-Ring	1			

SPECIFICATIONS:

Capacity -----	1000kgs
Minimum Height -----	210mm
Maximum Height -----	775mm
Sideways Adjustment L/R -----	30°/30°
Forward/Backward Tilt -----	60°/17°
Saddle Size -----	180x200mm
Base Size (LxW) -----	900x492mm
Net Weight -----	67kgs
Shipping Weight -----	70kgs

ASSEMBLY

All numbers in parenthesis() refer to the index number from the parts breakdown.

1. Mount the four angle brackets (100) to the saddle (94) using four hex cap screws (102), and four washers (101).
2. Insert four hook guides (91) into the angle bracket holes and tighten using four washers (96) and four hex nuts (95).
3. Place two chain screws (90) through hook guides and thread into chain connectors (92).
4. Thread a hex nut (98) part way up the chain hook (99) followed by a washer (97). Place through hook guides and attach with washer (91), and hex nut (98). Repeat for second chain hook.
5. Screw the pump handle (2) into the socket (5).
6. Tighten knob (32) clockwise to close the pump release valve. Pump handle up and down to lift the whole stroke. Release knob (31) for lowering. Test jack raising and lowering operation several times before use.

OPERATION

All numbers in parenthesis () refer to the index number from the parts breakdown.

1. Move the jack into position.
2. Turn the knob (32) clockwise fully to close the valve.
3. Move the pump lever (2) up and down to raise the saddle.
4. Adjust the angle screws (75&88) to align with the shape of the transmission.
5. Adjust the angle brackets and the chain to secure the transmission on the saddle.
6. Remove the transmission from the vehicle.
7. Turn the knob (32) counter-clockwise slowly to lower the saddle. Always lower the saddle slowly. Always transport the load in the lowered position with the chains securely fastened.
8. Reverse this procedure when mounting the transmission.

MAINTENANCE

1. The hydraulic cylinder assembly contains hydraulic fluid that must be kept at approximately 80% of full at all times for proper operation. To check the level and to fill remove screw (26).
2. Fill with clean hydraulic fluid only.
3. Replace the screw.

LUBRICATION

1. Lubricate the shaft threads of the angle screw assembly (75&88) with #2 tube grease when necessary.
Lubricate grease fitting (78) once every three months, depending on usage, with #2 tube grease.

PARTS LIST

Index No.	Description	QTY	Index No.	Description	QTY
1	Handle Grip	1	54	Wiper	1
2	handle	1	55	Pin	1
3	Rivet	1	56	Link Rod	1
4	Rivet	1	57	Side Plates	1
5	Socket	1	58	Caster Seat	4
6	Snap Ring	1	59	Lock Washer	2
7	Plunger	1	60	Screw	2
8	Wiper	1	61	Screw	6
9	Back-Up Ring	1	62	Thrust Bearing	4
10	O-Ring	1	63	Nut	2
11	Pump	1	64	Lock Washer	2
12	Pump Seat	1	65	Screw	4
13	Seal Ring	1	66	Slot	2
14	Screw	1	67	Screw	4
15	Spring	1	68	Long Link Rod	2
16	Ball	5	69	Snap Ring	4
17	Screw	1	70	Spacer	2
18	O-Ring	1	71	Short Link Rod	2
19	Spring	1	72	Nut	2
20	Screw	1	73	Thrust Bearing	3
21	Seal Ring	1	74	Guide Axle	1
22	Spring	1	75	Screw	1
23	Screw	1	76	Snap Ring	4
24	Seal Ring	1	77	Snap Ring	2
25	Ball	1	78	Grease Fitting	1
26	Screw	2	79	Shaft Arm	1
27	O-Ring	2	80	Lifting Arm Assembly	1
28	Screw	1	81	Axle	1