



45 XA - 55 XA

Access like never before

- Hydraulic outriggers and automatic leveling allow operation in under 30 seconds
- High performance 4WD and light weight provide access to places larger and heavier machines cannot go
- Easily transported on a trailer with no commercial driver's license requirement
- Dual power source (DC / Gas) allows for indoor/outdoor use

Optimum performance

- 4,500 Watt generator
- Air / water lines to platform
- 110V GFI protected power to the platform



Haulotte 
GROUP

More than lifting

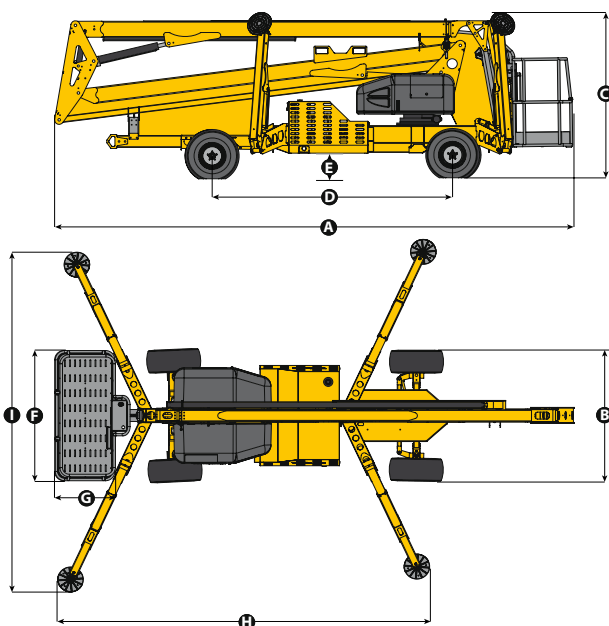


45 XA - 55 XA

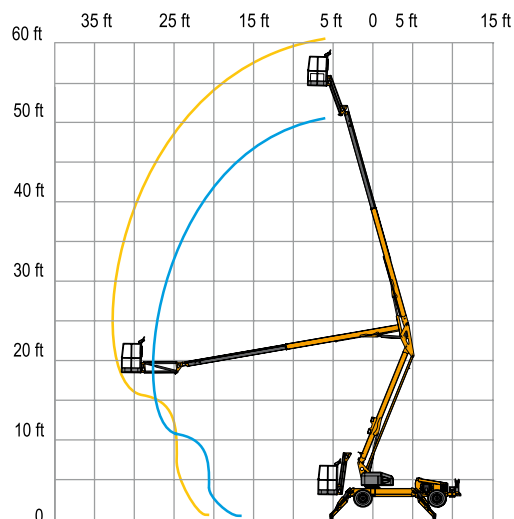
LIGHT-WEIGHT SELF-PROPELLED

TECHNICAL DATA

| | 45 XA | 55 XA |
|--|-------------------------|---|
| Working height | 51 ft | 61 ft 3 in |
| Platform height | 45 ft | 55 ft 3 in |
| Horizontal outreach (from centerline) | 27 ft | 33 ft 5 in |
| Horizontal outreach (from edge of footpad) | 21 ft | 27 ft 4 in |
| Up and over height | 20 ft 9 in | 23 ft 1 in |
| Lift capacity | 500 lb | |
| A - Length - stowed | 18 ft 2 in | 21 ft 2 in |
| B - Width stowed | 5 ft 6 in | 5 ft 8 in |
| C - Height stowed | 6 ft 7 in | 6' 9" |
| D - Wheelbase | 8 ft 9 in | 10 ft 1 in |
| E - Ground clearance | 6 in | 10 in |
| F x G - Platform size | 5 ft x 2 ft 6 in | |
| H x I - Outrigger footprint | 12 ft 4 in x 11 ft 4 in | 13 ft 11 in x 12 ft 9 in |
| Turntable rotation | 700° non-continuous | |
| Jib - length | 4 ft 3 in | |
| Jib - Vertical motion | 150° (+70 / -80) | |
| Drive speed | 3.5 mph (max) | 5 mph (max) |
| Gradeability | 45% | |
| Turning radius - inside (2WS) | 12 ft 6 in | 11 ft |
| Turning radius - inside (4WS) | N/A | 6 ft 10 in |
| Tire size | 26 x 12 Bar lug | |
| Batteries | 4 x 6V 245 Amp-hr | |
| Engine | 22 hp gas Kawasaki | 31 hp gas Kubota OR 24 hp diesel Kubota |
| Weight | 4,900 lb | 6,000 lb |



45 XA - 500 lb / 2x 55 XA - 500 lb / 2x



STANDARD EQUIPMENT

- Hydraulic outriggers
- Automatic leveling system
- Self-leveling platform
- Air and water lines to platform
- 110V GFI protected outlet to platform and base
- 4,500 W generator
- Hour meter
- Battery condition indicator
- Dual power system
- Easy to use controls with logically positioned buttons
- Tilt alarm / sensor
- Spring applied hydraulic released brakes
- Inboard 24 amp charger
- Bar lug tires
- 4-Wheel steering (55XA only)

OPTIONS AND ACCESSORIES

- Material lifting hook
- Manual platform rotator (45XA only)
- Flashing beacon
- Flourescent tube caddy
- Tool tray
- Turf tires (45XA ONLY)
- Dual fuel - 31 HP gas / liquid propane Kubota (55XA ONLY)

0205-0090 - Non contractual document - We reserve the right to modify the technical characteristics of this document without notice - 01/2013

