



Operating Instructions and Parts Manual SLT-1100 Jumbo Scissor Lift Table



JET

427 New Sanford Road
LaVergne, Tennessee 37086
Ph.: 800-274-6848
www.jettools.com

Part No. M-140780
Revision B1 05/2014
Copyright © 2014 JET

Warranty and Service

JET® warrants every product it sells against manufacturers' defects. If one of our tools needs service or repair, please contact Technical Service by calling 1-800-274-6846, 8AM to 5PM CST, Monday through Friday.

Warranty Period

The general warranty lasts for the time period specified in the literature included with your product or on the official JET branded website.

- JET products carry a limited warranty which varies in duration based upon the product. (See chart below)
- Accessories carry a limited warranty of one year from the date of receipt.
- Consumable items are defined as expendable parts or accessories expected to become inoperable within a reasonable amount of use and are covered by a 90 day limited warranty against manufacturer's defects.

Who is Covered

This warranty covers only the initial purchaser of the product from the date of delivery.

What is Covered

This warranty covers any defects in workmanship or materials subject to the limitations stated below. This warranty does not cover failures due directly or indirectly to misuse, abuse, negligence or accidents, normal wear-and-tear, improper repair, alterations or lack of maintenance.

Warranty Limitations

Woodworking products with a Five Year Warranty that are used for commercial or industrial purposes default to a Two Year Warranty. Please contact Technical Service at 1-800-274-6846 for further clarification.

How to Get Technical Support

Please contact Technical Service by calling 1-800-274-6846. **Please note that you will be asked to provide proof of initial purchase when calling.** If a product requires further inspection, the Technical Service representative will explain and assist with any additional action needed. JET has Authorized Service Centers located throughout the United States. For the name of an Authorized Service Center in your area call 1-800-274-6846 or use the Service Center Locator on the JET website.

More Information

JET is constantly adding new products. For complete, up-to-date product information, check with your local distributor or visit the JET website.

How State Law Applies

This warranty gives you specific legal rights, subject to applicable state law.

Limitations on This Warranty

JET LIMITS ALL IMPLIED WARRANTIES TO THE PERIOD OF THE LIMITED WARRANTY FOR EACH PRODUCT. EXCEPT AS STATED HEREIN, ANY IMPLIED WARRANTIES OF MERCHANTABILITY AND FITNESS FOR A PARTICULAR PURPOSE ARE EXCLUDED. SOME STATES DO NOT ALLOW LIMITATIONS ON HOW LONG AN IMPLIED WARRANTY LASTS, SO THE ABOVE LIMITATION MAY NOT APPLY TO YOU.

JET SHALL IN NO EVENT BE LIABLE FOR DEATH, INJURIES TO PERSONS OR PROPERTY, OR FOR INCIDENTAL, CONTINGENT, SPECIAL, OR CONSEQUENTIAL DAMAGES ARISING FROM THE USE OF OUR PRODUCTS. SOME STATES DO NOT ALLOW THE EXCLUSION OR LIMITATION OF INCIDENTAL OR CONSEQUENTIAL DAMAGES, SO THE ABOVE LIMITATION OR EXCLUSION MAY NOT APPLY TO YOU.

JET sells through distributors only. The specifications listed in JET printed materials and on official JET website are given as general information and are not binding. JET reserves the right to effect at any time, without prior notice, those alterations to parts, fittings, and accessory equipment which they may deem necessary for any reason whatsoever. JET® branded products are not sold in Canada by JPW Industries, Inc.

Product Listing with Warranty Period

90 Days – Parts; Consumable items; Light-Duty Air Tools
1 Year – Motors; Machine Accessories; Heavy-Duty Air Tools; Pro-Duty Air Tools
2 Year – Metalworking Machinery; Electric Hoists, Electric Hoist Accessories
5 Year – Woodworking Machinery
Limited Lifetime – JET Parallel clamps; VOLT Series Electric Hoists; Manual Hoists; Manual Hoist Accessories; Shop Tools; Warehouse & Dock products; Hand Tools

NOTE: JET is a division of JPW Industries, Inc. References in this document to JET also apply to JPW Industries, Inc., or any of its successors in interest to the JET brand.

Table of Contents

Warranty and Service.....	2
Table of Contents.....	3
Introduction	4
Specifications.....	4
Assembly.....	5
Operation	5
Maintenance.....	6
Replacement Parts.....	6
Parts Breakdown for SLT-1100 Scissor Lift Table	7
Parts List for SLT-1100 Scissor Lift Table.....	8

Warnings

1. Read and understand the owner's manual before assembly and operation.
2. Do not load scissor lift beyond its rated capacity.
3. Do not allow people to sit or ride on scissor lift.
4. Always secure load in center of table before raising, lowering or moving scissor lift.
5. Do not transport loads in the raised position.
6. Use on smooth, level, finished floors only.
7. Pull release lever fully to allow load to descend in a controlled manner.
8. Keep hands and feet clear of table when lowering load.
9. Failure to comply with the above warnings may result in personal injury and/or property damage.

Introduction

This manual is provided by JET, covering the safe operation and maintenance procedures for a JET Model SLT-1100H Jumbo Scissor Lift Table. This manual contains instructions on installation, safety precautions, general operating procedures, maintenance instructions and parts breakdown. This machine has been designed and constructed to provide years of trouble free operation if used in accordance with instructions set forth in this manual. If there are any questions or comments, please contact either your local supplier or JET. JET can also be reached at our web site: www.jettools.com.

Specifications

Model Number.....	SLT-1100
Stock Number	140780
Capacity (lbs)	1,100
Table Size, L x W (in)	63 x 31-1/2
Maximum Height (in)	36
Minimum Height (in)	11-1/8
Handle Height (in)	39
Strokes to Reach Maximum Height.....	33
Wheel Diameter (in.)	5
Overall Dimensions, L x W x H (in)	73-1/2 x 31-1/2 x 39
Net Weight (lbs)	282
Shipping Weight (lbs)	292

The above specifications were current at the time this manual was published, but because of our policy of continuous improvement, JET reserves the right to change specifications at any time and without prior notice, without incurring obligations.

Assembly

1. Attach the handle (A, Figure 1) to the frame using two hex cap bolts, two lock washers, two flat washers. Tighten with a 19mm wrench.

Note: The two rear casters can be locked so that they do not rotate. Press foot lever (B, Figure 1)

2. Attach foot lever (A, Figure 2) to the lever bracket (B, Figure 2) with one hex cap screw, one flat washer, and one lock washer (C, Figure 2). Tighten with a 14mm wrench.

⚠WARNING Keep hands and feet clear of table and scissor lift openings while lowering load. Failure to comply may cause serious injury!

3. Pump the foot lever several cycles so that the table is out of your way while attaching the cable.

Note: Place a 2" x 4" board straight up and down between the table and frame so that the table cannot come down on you while attaching the cable.

4. Route the cable (A, Figure 3) into the cable nut (B, Figure 3). Run the cable through the lowering mechanism (C, Figure 3) and pull the cable tight. Tighten the hex nut (D, Figure 3) using a 14mm wrench.

Note: You may have to turn the socket head cap screw to line up the hole. This will allow the cable to pass through freely.

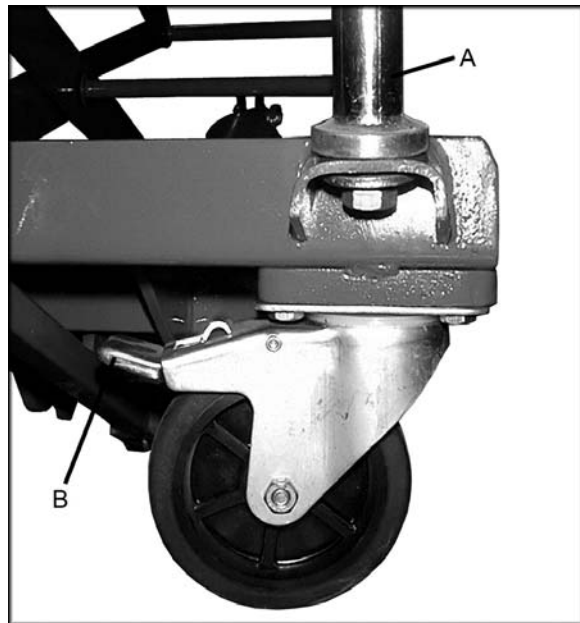


Figure 1

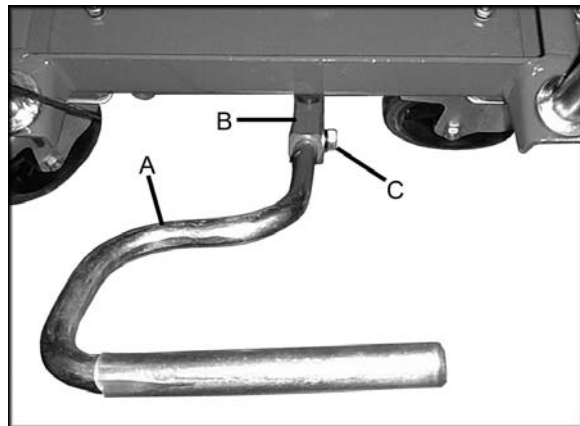


Figure 2

Operation

1. The table can be raised by pumping the foot lever.
2. To lower the table, pull the release lever fully. This allows the table to lower in a slow, controlled manner.
3. Before loading, lock both caster brakes.
4. Center and secure load on table.
5. Before moving load, lower table fully and unlock caster brakes.

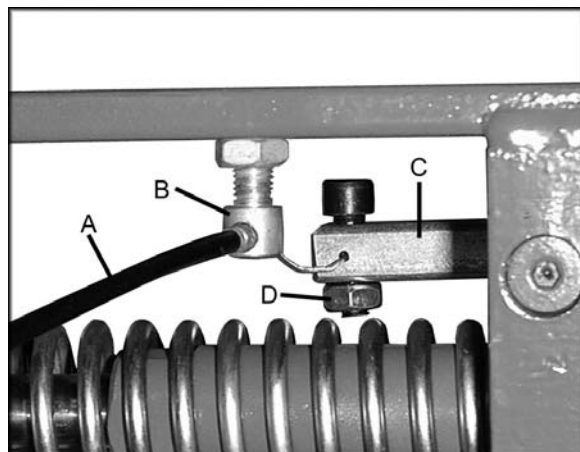


Figure 3

Maintenance

1. Lubricate each friction point monthly with #2 tube grease.
2. Check the movement and wear of wheels.
3. Check for oil leakage from the hydraulic cylinder.
4. Store with table in lowered position.

Troubleshooting

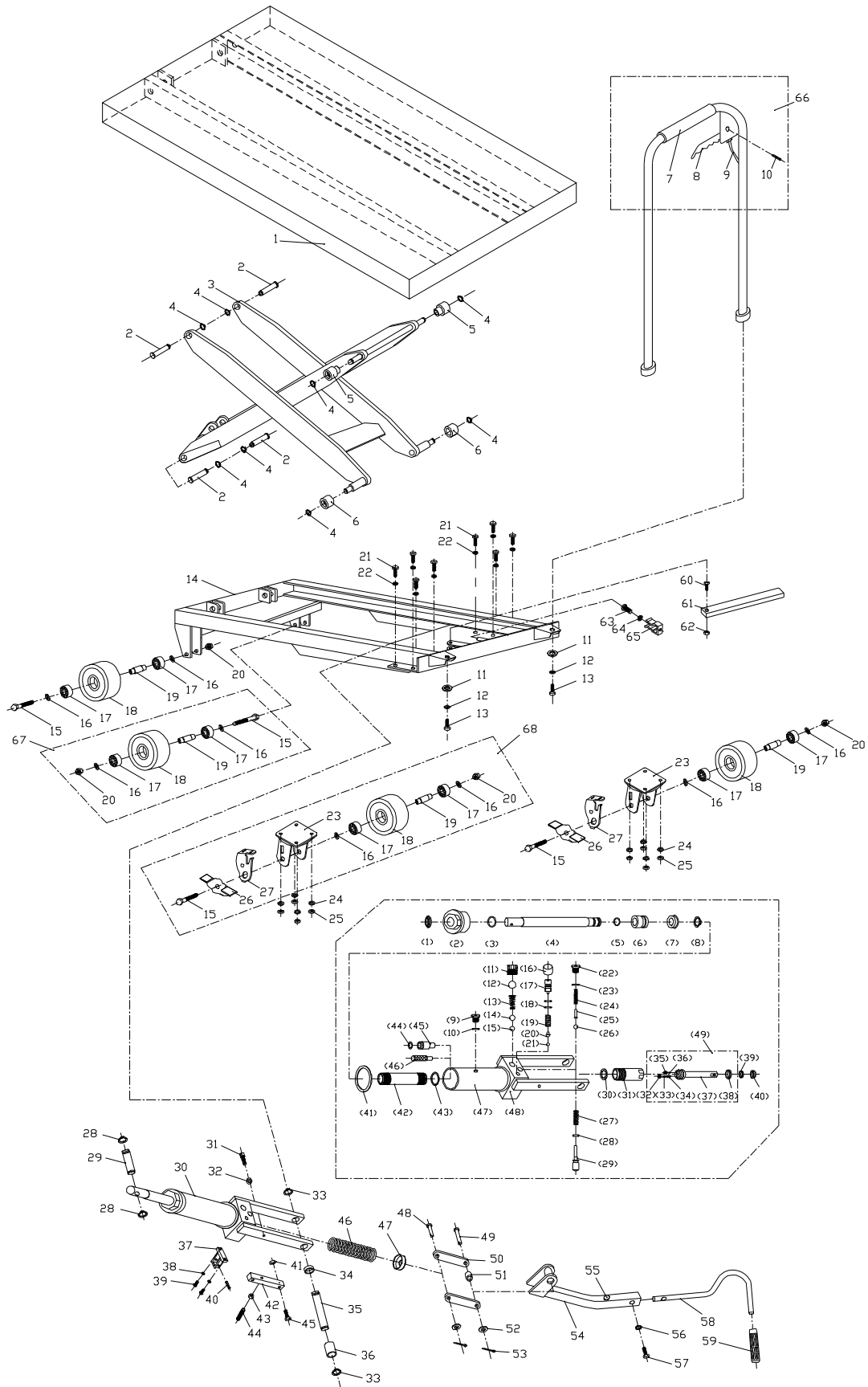
Items in parentheses refer to the index numbers in the parts breakdown.

Trouble	Probable Cause	Remedy
Table will not lift.	Oil level low in hydraulic pump.	Remove hex cap plug (9) and fill with hydraulic fluid.
	Lowering valve (29) or steel ball (26) is not seating.	Clean lowering valve (29) or steel ball (26) or replace.
	Socket set screw (44) for pressure relief valve (11) is not adjusted properly.	Reload truck within load capacity and adjust valve by tightening or loosening socket set screw (44).
Table will not remain elevated.	Lowering valve (29) or steel ball (26) not seating properly.	Clean or replace lowering valve (29) or steel ball (26).
	O-ring (5) or oil seal (7) is worn out.	Replace o-ring (5) or oil seal (7).
Table will not lower.	Oil seal (7) is worn out.	Replace oil seal (7).
	Lowering valve (29) is clogged.	Replace lowering valve (29).
Oil leaks from lowering valve (29).	O-ring (28) is worn out.	Replace o-ring (28).
Oil leaks from pump cylinder (30).	Oil seal (39) or dust cover (40) worn out.	Replace oil seal (39) or dust cover (40).

Replacement Parts

Replacement parts are listed on the following pages. To order parts or reach our service department, call 1-800-274-6848, Monday through Friday (see our website for business hours, www.jettools.com). Having the Model Number and Serial Number of your machine available when you call will allow us to serve you quickly and accurately.

Parts Breakdown for SLT-1100 Scissor Lift Table



Parts List for SLT-1100 Scissor Lift Table

Index No.	Part No.	Description	Size	Qty
1	SLT1100-01	Table		1
2	SLT1100-06	Link Shaft		4
3	SLT1100-02	Link Assembly		1
4	SLC660F-03	C-Ring	M16	8
5	SLT1100-04	Roller Guide		2
6	SLT1100H-06	Roller Guide		2
7	SLT1100H-07	Handle		1
8	SLT660FH-09	Release Lever		1
9	SLT660FH-10	Cable		1
10	SLT660FH-11	Spring Pin	Ø 6x28 mm	1
11	TS-2361021	Washer	Ø 12mm	2
12	TS-2361121	Spring Washer	Ø 12mm	2
13	Ts-1492011	Hex Cap Screw	M12x25	2
14	SLT1100H-14	Frame		1
15	SLT660FH-25	Hex Cap Screw	M12x95	4
16	SLT660FH-26	Washer		8
17	BB-6203ZZ	Bearing	6203ZZ	8
18	SLT660FH-28	Wheel	Ø 5"	4
19	SLT660FH-29	Bushing		4
20	TS-2342121	Lock Nut	M12	4
21	TS-1490031	Hex Cap Screw	M8x20	8
22	TS-1551061	Lock Washer	Ø 8mm	8
23	SLT660FH-33	Swivel Wheel Holder		2
24	TS-1551061	Lock Washer	Ø 8mm	8
25	TS-1541031	Lock Nut	M8	8
26	SLT660FH-36	Brake Plate		2
27	SLT660FH-37	Stop Support		2
28	SLT660FH-38	C-Ring	Ø18mm	2
29	SLT660FH-39	Shaft		1
30	SLT1100H-30	Hydraulic Cylinder Assembly		1
[1]	SLT660F-36-1	Oil Seal*	DHS30	1
[2]	SLT1100-30-2	Top Nut		1
[3]	SLT660F-36-3	O-Ring*	Ø 36x3.5 mm	1
[4]	DSL770H-35-4	Lift Piston		1
[5]	DSL770H-35-5	O-Ring*	Ø 21x2.4 mm	1
[6]	DSL770H-35-6	Piston Bushing		1
[7]	DSL770H-35-7	U-Packing*	D50	1
[8]	DSL770H-35-8	C-Ring	Ø 22 mm	1
[9]	SLT660F-36-8	Air Breather		1
[10]	SLT660F-36-9	O-Ring*	Ø 11x1.9 mm	1
[11]	SLT660F-36-16	Valve Plug	M16x2	1
[12]	SB-12MM	Steel Ball	Ø 12mm	1
[13]	SLT660F-36-18	Spring		1
[14]	SLT660F-36-19	Steel Ball	Ø 9.525 mm	1
[15]	SLT660F-36-20	Steel Ball	Ø 6.35 mm	1
[16]	SLT660F-36-10	Relief Plug Cover		1
[17]	SLT660F-36-11	Relief Adjusting Screw		1
[18]	SLT660F-36-9	O-Ring*	Ø 11 x 1.9 mm	2
[19]	SLT660F-36-13	Spring		1
[20]	SLT660F-36-14	Steel Ball Support		1
[21]	SB-5MM	Steel Ball	Ø 5 mm	1
[22]	SLT660F-36-21	Screw	M10 x 1	1
[23]	SLT660F-36-9	O-Ring*	Ø 11 x 1.9 mm	1
[24]	SLT660F-36-23	Spring		1
[25]	SLT660FH-40-24	Steel Ball Support		1
[26]	SB-5MM	Steel Ball	Ø 5 mm	1
[27]	SLT660F-36-25	Spring		1
[28]	SLT660F-36-26	O-Ring*	Ø 10 x 1.9 mm	1
[29]	SLT660F-36-27	Adjusting Shaft		1
[30]	SLT660FH-40-29	Inner Washer*		1

Index No.	Part No.	Description	Size	Qty
[31]	SLT660F-36-29	Pump Cylinder		1
[32]	SLT660F-36-32	Screw		1
[33]	SLT660F-36-33	Valve Plug		1
[34]	SLT660F-36-34	Spring		1
[35]	SLT660F-36-30	Screw		1
[36]	SB-5MM	Steel Ball	Ø 5 mm	1
[37]	SLT660F-36-36	Pump Piston		1
[38]	SLT660F-36-35	Oil Seal*	UHS23.5	1
[39]	SLT660F-36-37	Oil Seal*	UHS18	1
[40]	SLT660F-36-38	U-Packing*	DHS18	1
[41]	DSL770FH-35-41	Outer Washer*		2
[42]	DSL770FH-35-42	Inside Cylinder Tube		1
[43]	DSL770FH-35-43	Inside Washer*		1
[44]	SLT660FH-40-43	O-Ring*	Ø 12 x 1.9mm	1
[45]	SLT660FH-40-44	Special Lowering Valve		1
[46]	SLT660FH-40-45	Filter		1
[47]	DSL770FH-35-47	Outer Cylinder Tube		1
[48]	DSL770FH-35-48	Pump Body		1
[49]	DSL770H-35-49	Pump Piston Assembly ([32-38])		1
31	SLT660FH-41	Adjusting Screw		1
32	TS-2311081	Hex Nut	M8	1
33	SLC660F-38	C-Ring	Ø 20mm	2
34	SLT660FH-44	Bushing		1
35	SLC660F-39	Shaft		1
36	SLT660FH-46	Bushing		1
37	SLT660F-67	Fixed Seat		1
38	TS-1551031	Spring Washer	Ø 5mm	2
39	SLT660F-74	Screw	M5 x 14	2
40	SLT660F-69	Spring Pin	Ø 6 x 22	1
41	TS-2311081	Hex Nut	M8	1
42	SLT660F-73	Fixed Board		1
43	SLT660F-70	Hex Nut	M8	1
44	SLT660F-71	Socket Set Screw	M8 x 30	1
45	TS-1490041	Hex Cap Screw	M8 x 25	1
46	SLC660F-40	Spring		1
47	SLC660F-41	Spring Cover		1
48	SLT660FH-58	Pin		1
49	SLT660FH-59	Pin		1
50	SLC660F-42	Slide Plate		1
51	SLC660F-56	Bushing		1
52	SLT660FH-62	Washer	Ø 10mm	2
53	SLT660FH-63	Split Pin	Ø 3 x 30mm	2
54	SLC660F-45	Lever		1
55	SLC660F-45A	Rubber Bumper		1
56	SLT660FH-22	Spring Washer	Ø 8mm	1
57	TS-1490051	Hex Cap Screw	M8 x 30	1
58	SLC660F-46	Foot Lever		1
59	SLC660F-47	Foot Lever Pad		1
60	SLT660FH-70	Hex Cap Screw	M10 x 30	1
61	SLT1100FH-61	Safety Bar		1
62	SLT660FH-72	Hex Nut	M10	1
63	SLT660FH-73	Hex Cap Screw	M6 x 10	1
64	SLT660FH-74	Spring Washer	Ø 6mm	1
65	SLT660FH-75	Spring Clip		1
66	SLT1100H-66	Handle Assembly (index #7-10)		1
67	SLT660FH-77	Front Wheel Assembly (index # 15-20)		1
68	SLT660FH-78	Swivel Wheel Assembly (index #15-20, 23-27)		1
	SLT1100-RK	Repair Kit		1

Index numbers with brackets [] are part of the hydraulic pump assembly.

Parts included in the Repair Kit are indicated by an asterisk *.

This page intentionally left blank.

This page intentionally left blank.



427 New Sanford Road
LaVergne, Tennessee 37086
Phone: 800-274-6848
www.jettools.com