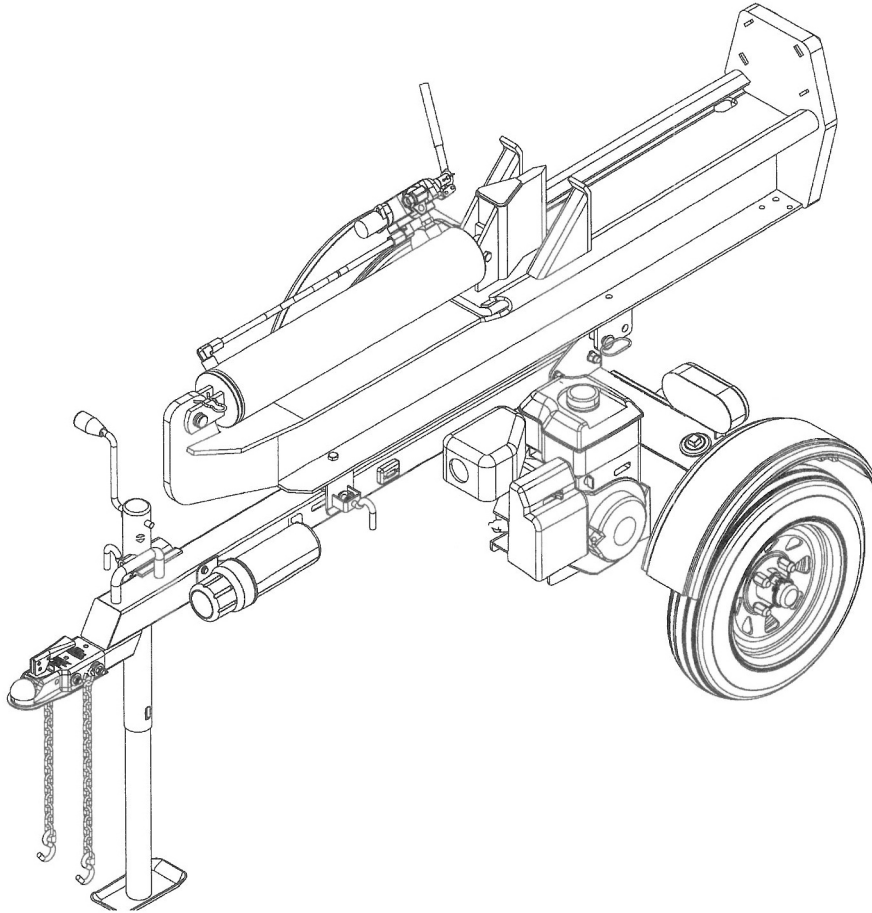


MTA[®]
Distributors

28 TON LOG SPLITTER



MODEL NO.

S401628MTA

Operator's Manual

ASSEMBLY & OPERATING INSTRUCTIONS



WARNING: All operators must read this manual before operating this log splitter. Follow the safety instructions in the manual and in decals attached to the product. Failure to do so could result in serious injury or death.

Table of Contents

	Page(s)
Important Safety Information.....	1-6
Intended Use	1
Personal Protective Equipment	1
Safety Decals	1-2
General Safety	3
Preparation of the Log	3
Work Area	3
Operation of the Log Splitter	4
Repair and Maintenance Safety	4-5
Hydraulic Safety	5
Fire Prevention	5-6
Towing Safety	6
Assembly Instructions	7-11
Parts Breakdown Illustrations.....	12-13
Operating Instructions	13-14
Engine Oil Recommendations	13
Hydraulic Oil Recommendations	13
Starting Instructions	14
Operation	14
Towing	14
Maintenance	15
Notes.....	16
Specifications	Back Cover



IMPORTANT SAFETY INFORMATION



WARNING: Read and thoroughly understand all instructions and safety information before assembling or operating this log splitter. Failure to do so may cause serious injury or death. Do not allow anyone to operate this log splitter who has not read this manual. As with all power equipment, a log splitter can be dangerous if assembled or used improperly. Do not operate this log splitter if you have doubts or questions concerning safe operation. Call our customer service department at 1-800-525-8322 to address these concerns.

Before operating the Honda engine that powers this log splitter, carefully read and thoroughly understand all operating instructions and safety information contained in the Honda engine owner's manual that accompanies this log splitter.

Si no entiende ingles, se prefiere que busque alguien que interprete las instrucciones para usted.

INTENDED USE

NEVER use this log splitter for any other purposes than splitting wood. It is designed for this use **only**. Any other use can cause serious injury or death.

PERSONAL PROTECTIVE EQUIPMENT



BEFORE operating this log splitter make sure that you wear safety gear such as goggles or safety glasses, steel toed shoes and tight fitting gloves (without loose cuffs or draw strings). Always wear a protective hearing device when operating this log splitter.

NEVER wear loose clothing or jewelry that can be caught by moving parts of the log splitter. Keep clothing and hair away from all moving parts when operating this log splitter.

SAFETY DECALS

Make sure that all safety warning decals are in good condition and readable. Always replace missing or defaced decals. Contact MTA Distributors at 1-800-264-0225 for replacement decals.



PART NUMBER: ORDER S52057900
LOCATION: HYDRAULIC CYLINDER
BELOW DECAL 51018900



IMPORTANT SAFETY INFORMATION

WARNING

**NEVER EXCEED 45 MPH
WHEN TOWING THIS LOG
SPLITTER.**

Equipment damage and
serious injury could result.

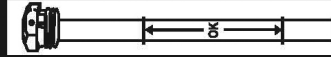
PART NUMBER: ORDER
S52057900
LOCATION: FRONT OF TONGUE

DANGER

DO NOT SIT OR RIDE ON THIS LOG SPLITTER
Serious injury or death could result.

PART NUMBER: ORDER
S52057900
LOCATION: SIDE OF BEAM

NOTICE



To prevent damage to the hydraulic system, do not fill tank beyond "OK" range on dipstick. Use universal hydraulic fluid or DEXTRON II Transmission Fluid. Use AW 32 or 46 type hydraulic fluid.

AVISO

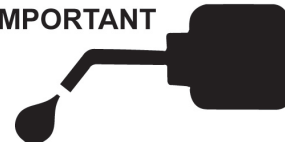
Para prevenir daños en el sistema hidráulico no llene el tanque más allá de la marca "OK" en la varilla. Use fluido hidráulico universal o fluido de transmisión DEXTRON II. Use fluido hidráulico tipo AW 32 o 46.

AVIS

Pour prévenir les dommages au système hydraulique, ne pas remplir le réservoir au-delà de la marque "OK" apparaissant sur la jauge graduée. Utilisez un fluide hydraulique universel ou le liquide pour Transmission DEXTRON II. Utilisez un fluide hydraulique de type AW 32 ou 46.

PART NUMBER: S52062400
LOCATION: HYDRAULIC TANK
LOWER TANK, RIGHT CORNER

IMPORTANT



HYDRAULIC FLUID ONLY

PART NUMBER: ORDER S52057900
LOCATION: TOP OF HYDRAULIC
TANK BY FILL HOLE



IMPORTANT SAFETY INFORMATION

GENERAL SAFETY

Failure to follow these instructions may result in serious injury or death.

ALWAYS read the operator's manual before operation. It is located in the plastic canister on the tongue.

NEVER allow children to operate this log splitter. **NEVER** allow adults lacking proper instructions and understanding to operate this log splitter.

KEEP all people and pets a minimum of 10 feet away from your work area when operating this log splitter. Only the operator is to be near the log splitter during use.

NEVER actuate the control until all people are clear of the work area.

NEVER operate the log splitter when under the influence of alcohol, drugs or medication.

NEVER allow a person who is tired or otherwise not alert to operate the log splitter.

PREPARATION OF THE LOG

Both ends of the log should be cut as square as possible to help prevent the log from riding out of the splitter during operation. Do not split logs greater than 26 inches (66 centimeters) in length.

WORK AREA

NEVER operate the log splitter on slippery, wet, muddy or icy ground.

ONLY operate your log splitter on level ground. Operating on a slope could cause the log splitter to roll over or logs to fall off.

ONLY use this log splitter **OUTSIDE**. Using a log splitter indoors **CAN KILL YOU IN MINUTES**. Never operate your log splitter in any enclosed area, or in a partly enclosed area, or in an area where the exhaust can enter open windows, doors or vents. The Honda engine that powers this log splitter emits exhaust fumes. Exhaust fumes contain poisonous carbon monoxide, a colorless and odorless gas which you cannot see or smell. **Breathing carbon monoxide can cause loss of consciousness and may lead to death.** Do not stand or work in the area where the exhaust emits from the muffler.

NEVER attempt to move your log splitter over hilly or uneven terrain without a tow vehicle or adequate help.

ALWAYS block the wheels to prevent movement of the log splitter while in operation.

ONLY operate your log splitter in daylight or under good artificial light.

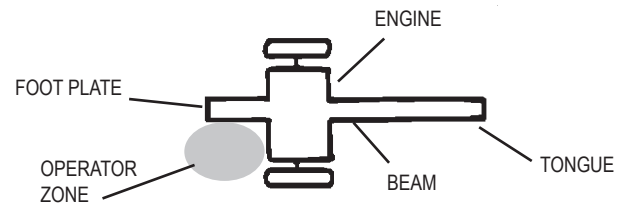
ALWAYS keep the work area clean. Remove split wood around your log splitter immediately so that you don't stumble over it.



IMPORTANT SAFETY INFORMATION

OPERATION OF THE LOG SPLITTER

ONLY operate the log splitter from the operator zone as shown in the diagram. The operator has the safest and most efficient access to the control valve and the beam in this location. Failure to operate the log splitter in this position can result in serious injury or death.



KNOW how to stop the log splitter and disengage the controls before operating it.

NEVER place hands or feet between the log and splitting wedge during forward or reverse stroke. Serious injury or death could result.

NEVER straddle or step over the log splitter during operation.

NEVER reach or bend over the log splitter to pick up a log.

NEVER try to split two logs on top of each other.

NEVER try to cross split a log.

NEVER attempt to load your log splitter when the ram or wedge is in motion.

ALWAYS use your hand to operate the control lever on the valve. **NEVER** use your foot, a rope or any extension device.

NEVER move the log splitter while the engine is running. Shut off the engine even if you are leaving the log splitter for a short period of time.

ALWAYS avoid contact with the muffler and other hot areas of the engine during operation or after running to prevent burns.

REPAIR AND MAINTENANCE SAFETY

NEVER operate your log splitter when it is in poor mechanical condition or in need of repair.

Periodically check that all nuts, bolts, screws, hydraulic fittings and hose clamps are tight.

NEVER alter your log splitter in any manner. Such alterations may cause your log splitter to be unsafe and will void the warranty.

Perform all recommended maintenance procedures before using your log splitter.

Replace all damaged or worn parts immediately.

NEVER tamper with the engine to run it at excessive speeds. The maximum engine speed is preset by the manufacturer and is within safety limits. Before operating, maintaining or servicing the Honda engine that powers this log splitter, carefully read and thoroughly understand all operating instructions, safety information and maintenance information contained in the Honda engine owner's manual that accompanies this log splitter.



IMPORTANT SAFETY INFORMATION

ALWAYS remove the spark plug wire before performing any service or repair on your log splitter.

ALWAYS check the level of hydraulic oil and engine oil before operation.

ALL replacement parts must meet manufacturer's specifications.

HYDRAULIC SAFETY

The hydraulic system of your log splitter requires careful inspection along with the mechanical parts. Be sure to replace frayed, kinked, cracked or otherwise damaged hydraulic hoses or hydraulic components.

NEVER check for leaks of hydraulic fluid with your hand. Fluid escaping from a small hole can be almost invisible. Escaping fluid under pressure can have sufficient force to penetrate skin causing serious personal injury or even death. Leaks can be detected by passing a piece of cardboard over the suspected leak and looking for discoloration.

ALWAYS seek professional medical attention immediately if injured by escaping hydraulic fluid. Serious infection or reaction can develop if proper medical treatment is not administered immediately.

ALWAYS be sure to relieve all pressure by shutting off the engine and moving the valve control handle back and forth should it become necessary to loosen or remove any hydraulic fitting.

NEVER remove the cap from the hydraulic tank or reservoir while the log splitter is running. The tank could contain hot oil under pressure which could result in serious injury.

NEVER adjust the hydraulic valve. The pressure relief valve on your log splitter is preset at the factory. Only a qualified service technician should perform this adjustment.

FIRE PREVENTION

NEVER operate your log splitter near a flame or spark. Hydraulic oil and gasoline are flammable and can explode.

NEVER fill the gas tank while the engine is hot or running. Allow the engine to cool before refueling. Read and follow the refueling instructions contained in the Honda engine owner's manual that accompanies this log splitter.

NEVER smoke while operating or refueling your log splitter. Gas fumes can easily explode.

ONLY refuel your log splitter in a clear area with no gas fumes or spilled gas.

ALWAYS use an approved fuel container.

ALWAYS replace the gas cap securely.

If gasoline has spilled, move the log splitter away from the area of the spill and avoid creating any source of ignition until the spilled gas has evaporated.

ALWAYS take a Class B fire extinguisher with you when operating this log splitter in dry areas as a precautionary measure against possible flying sparks.

ALWAYS turn the fuel shut off valve on the engine to the "OFF" position before towing the log splitter. Failure to do so may result in flooding the engine.



IMPORTANT SAFETY INFORMATION

ALWAYS drain the fuel tank prior to storage to avoid the potential fire hazard.

ALWAYS store gasoline in an approved, tightly sealed container. Store the container in a cool, dry place.

NEVER store gasoline in the house or near a heating appliance.

IMPORTANT NOTE:

This log splitter is equipped with an internal combustion engine and should not be used on or near any unimproved forest-covered, brush-covered or grass-covered land unless the engine's exhaust system is equipped with a spark arrester meeting applicable local or state laws (if any). If a spark arrester is used, it should be maintained in effective working order by the operator. In the state of California a spark arrester is required by law. Other states have similar laws. Federal laws apply on federal lands. A spark arrester muffler (optional by manufacturer) is available as an accessory at your nearest engine dealer. Always check the legal requirements in your area.

TOWING SAFETY

ALWAYS check all local and state regulations regarding towing, licensing, and lights before towing your log splitter.

ALWAYS check before towing to make sure that the log splitter is correctly and securely attached to the towing vehicle and that the safety chains are secured to the hitch or bumper of the vehicle with enough slack to allow turning. Always use a Class I, 2" ball with this log splitter.

NEVER carry any cargo or wood on your log splitter.

NEVER allow anyone to sit or ride on your log splitter.

ALWAYS disconnect your log splitter from the towing vehicle before operating it.

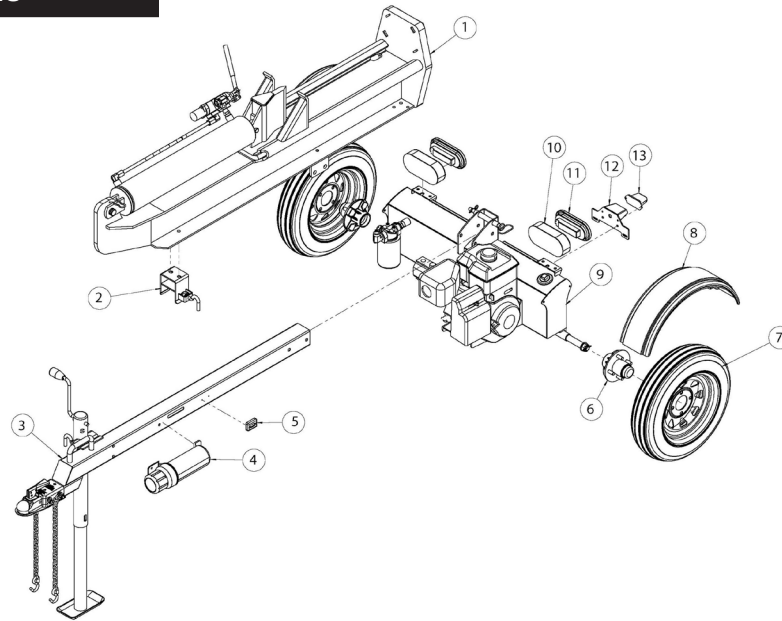
ALWAYS be careful when backing up with your log splitter in tow. It could jackknife.

ALWAYS allow for added length of your log splitter when turning, parking, crossing intersections and in all driving situations.

NEVER exceed 45 mph when towing your log splitter. Towing the log splitter at speeds higher than 45 mph could result in loss of control, damage to the equipment, serious injury or death. Adjust towing speed for terrain and conditions. Be extra cautious when towing over rough terrain especially railroad crossings.

ALWAYS check the log splitter brake lights before towing in the dark.

ASSEMBLY INSTRUCTIONS



ITEM NO.	PART NO.	DESCRIPTION	QTY.
1	S40160100	Beam Assembly	1
2	S40127500	Beam Lock Assembly	1
3	S40127200	Tongue Assembly	1
4	S24087600	Manual Canister	1
5	S40160600	Hour Meter	1
6	S40035400	Wheel Hub	2
7	S40035300	4.8 x 12" Wheel	2
8	S40142000	Fender	2
9	S401199LEA	Tank Assembly	1
10	S40160500	Light	2
11	S40129100	Light Housing	2
12	S40129000	License Plate Bracket	1
13	S40160400	License Plate Light	1
	S40110600	Hardware Kit (not shown)	1

NOTE: This log splitter was partially assembled at the factory. Refer to the drawing and parts list should it become necessary to disassemble the unit for repair or replacement of parts.

STEP 1: Remove all the components from the crate. Inspect each piece for shipping damage. If any part is damaged, contact your dealer or delivering carrier.

STEP 2: Insert the flat washer (2) into the wheel hub as shown. Screw on the 3/4" slotted nut (3) and tighten until bearing play is removed and the wheel will still rotate freely. Install the cotter pin (4) through the hole in the spindle and attach the hub cap (5). Repeat for the other wheel hub. The grease seal and the bearing cups are already installed in the wheel hub.

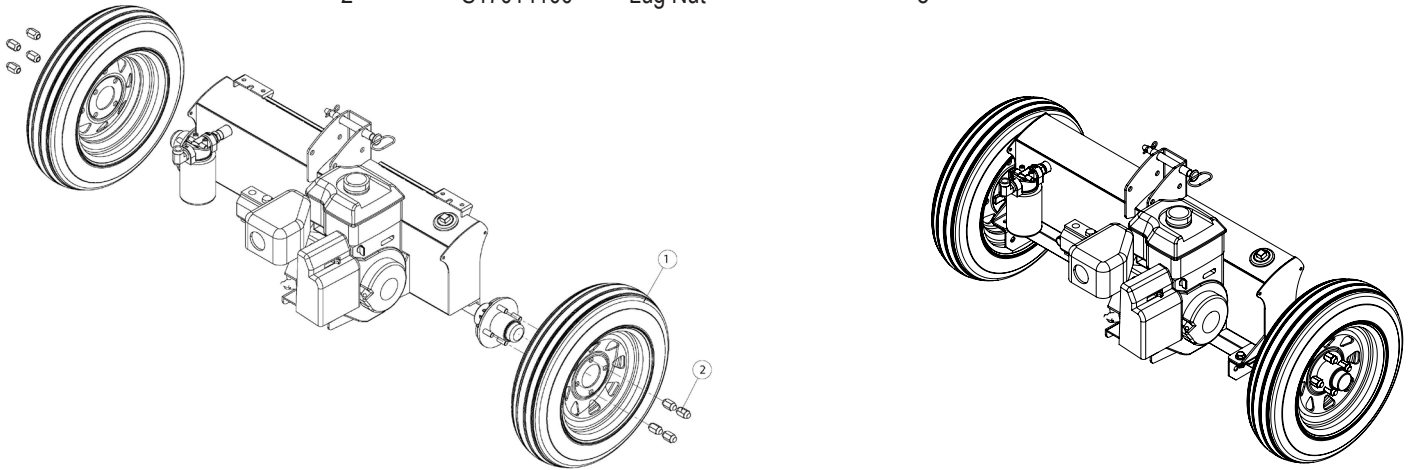
ITEM NO.	PART NO.	DESCRIPTION	QTY.
1	S40035400	Wheel Hub	2
2	O/L	3/4" Flat Washer	2
3	S17102000	3/4"-16 Slotted Nut	2
4	O/L	1/8" x 1-1/4" Cotter Pin	2
5	S40033200	Hub Cap	2

O/L- Obtain locally. Common fasteners available through hardware and farm stores.

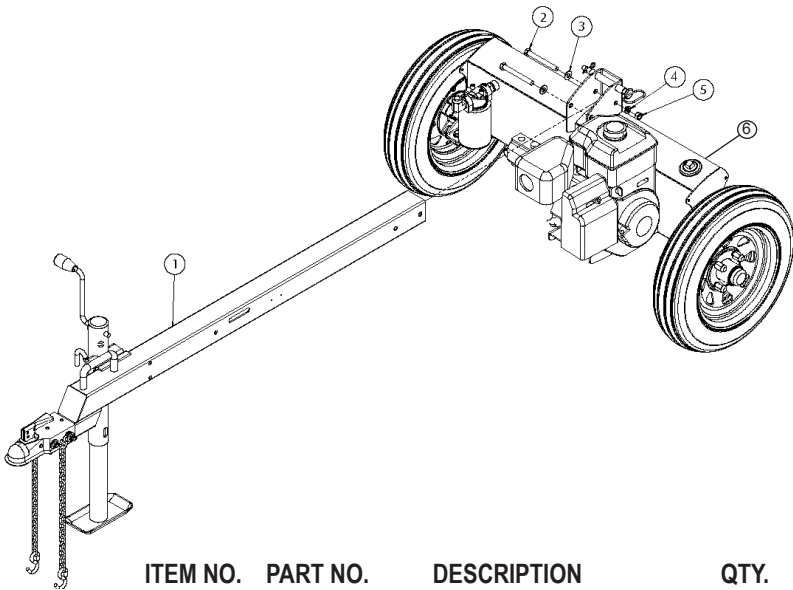
ASSEMBLY NOTE: For easier mounting of the fenders go to step 9 now. After the fenders are mounted proceed to step 3 below.

STEP 3: Attach the two wheels (1) to the hubs on the tank assembly using the four lug nuts (2). Tighten nuts.

ITEM NO.	PART NO.	DESCRIPTION	QTY.
1	S40035300	4.80 X 12" Wheel	2
2	S17014100	Lug Nut	8

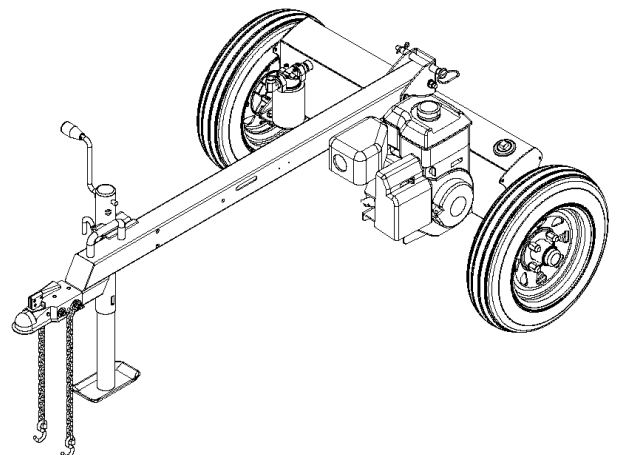


STEP 4: Attach the tongue assembly (1) to the tank/axle assembly (6) using two 1/2" NC x 4-1/2" hex cap bolts (2), two 1/2" flat washers (3), two 1/2" lock washers (4) and two 1/2" hex nuts (5). Make sure that the bolts are inserted from left to right as shown on the drawing below. Tighten.

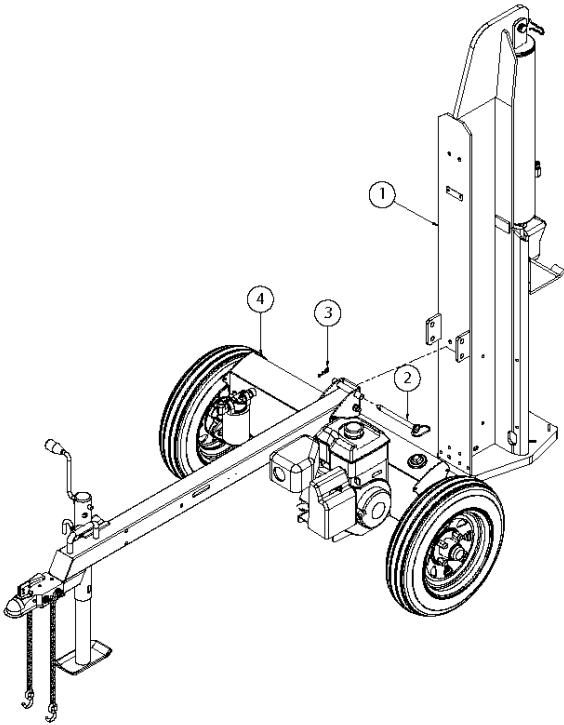


ITEM NO.	PART NO.	DESCRIPTION	QTY.
1	S40127200	Tongue Assembly	1
2	O/L	1/2" NC x 4-1/2" Hex Bolt	2
3	O/L	1/2" Flat Washer	2
4	O/L	1/2" Flat Washer	2
5	O/L	1/2" NC Hex Nut	2
6	S401199LEA	Tank/Axle Assembly	1

O/L- Obtain locally. Common fasteners available through hardware and farm stores.

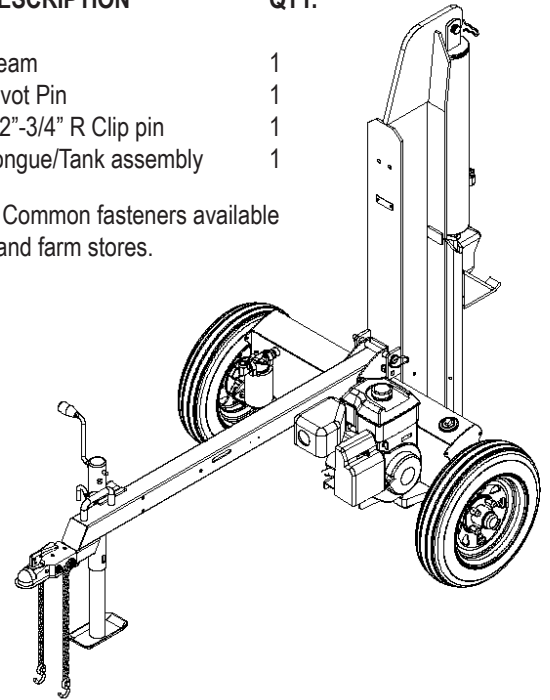


STEP 5: Stand the beam (1) up on end. Two people may be required for this step to ensure safety. Make sure that the beam is stable and on a level surface. Remove the pivot pin (2) and the clip pin (3) from the tank assembly (4). Roll the tank/tongue assembly (4) into position between the two tabs on the beam (1). Use the upper two holes. Slide the pivot pin (2) through the holes and lock in position with the clip pin (3).

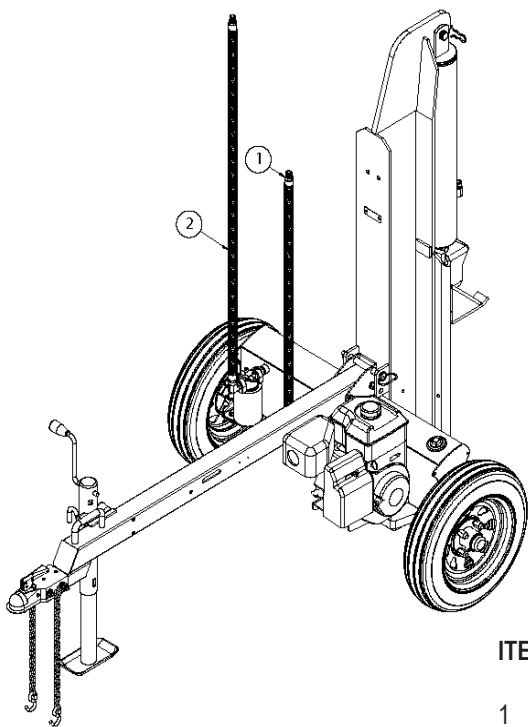


ITEM NO.	PART NO.	DESCRIPTION	QTY.
1	S40141300	Beam	1
2	S070122WC	Pivot Pin	1
3	O/L	1/2"-3/4" R Clip pin	1
4	----	Tongue/Tank assembly	1

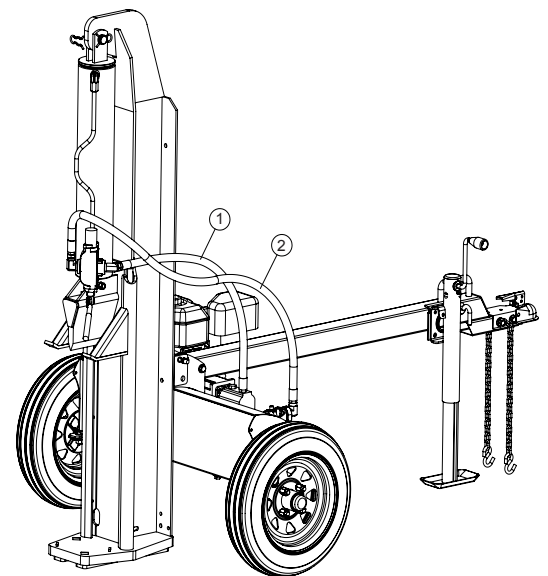
O/L- Obtain locally. Common fasteners available through hardware and farm stores.



STEP 6: Connect the end of the 1/2" x 38" pressure hose (1) coming from the pump to the port on the bottom of the valve. This is the "IN" port. Connect the end of the 1/2" x 56" pressure hose (2) coming from the oil filter on the tank to the port on the top of the valve. This is the "OUT" port of the control valve.



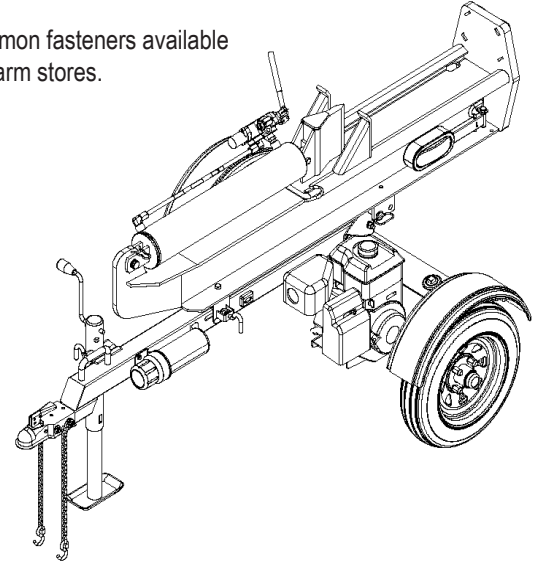
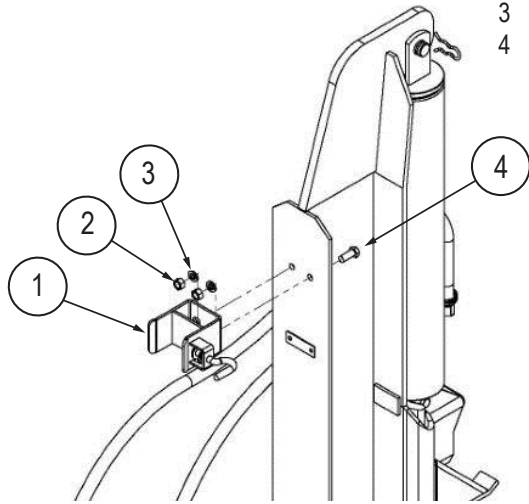
ITEM NO.	PART NO.	DESCRIPTION	QTY.
1	S39027500	1/2" X 38" Pressure Hose	1
2	S39027400	3/4" x 56" Return Hose	1



STEP 7: Loosely attach the latch assembly (1) to the bottom side of the beam as shown in the diagram using the two 1/2" x 1-1/4" GR 5 hex cap bolts (4), the two 1/2" lock washers (3) and the two 1/2" hex nuts (2). Lower the beam onto the tongue. Center the latch assembly on the tongue and tighten hardware.

ITEM NO.	PART NO.	DESCRIPTION	QTY.
1	S40127500	Beam Lock	1
2	O/L	1/2" Hex Nut	2
3	O/L	1/2" Lock Washer	2
4	O/L	1/2" x 1-1/4" GR5 Hex Bolt	2

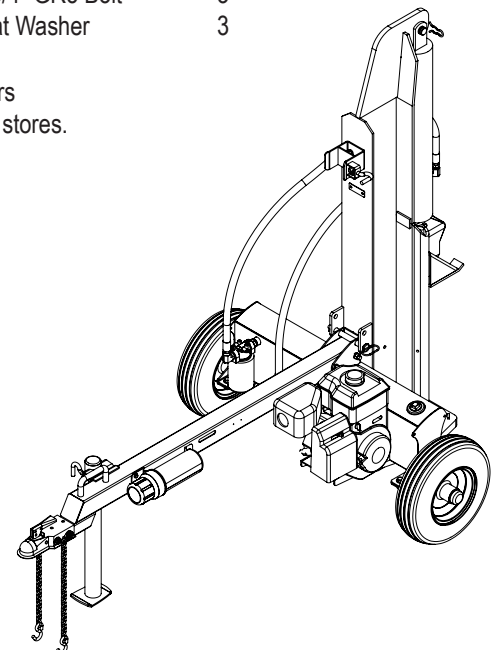
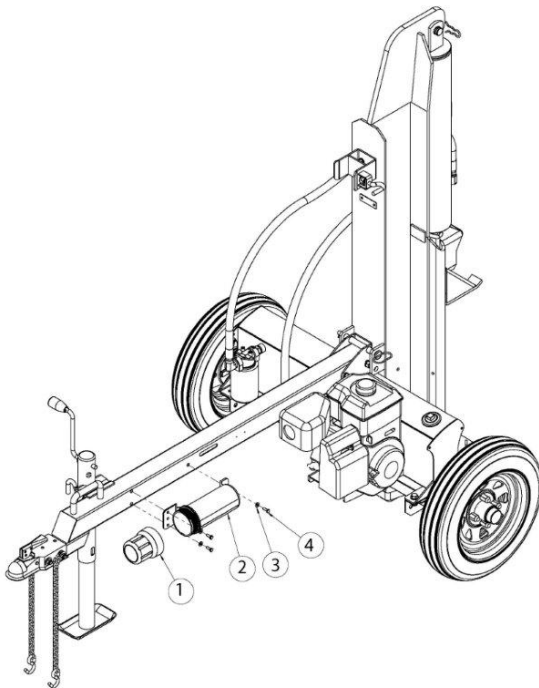
O/L- Obtain locally. Common fasteners available through hardware and farm stores.



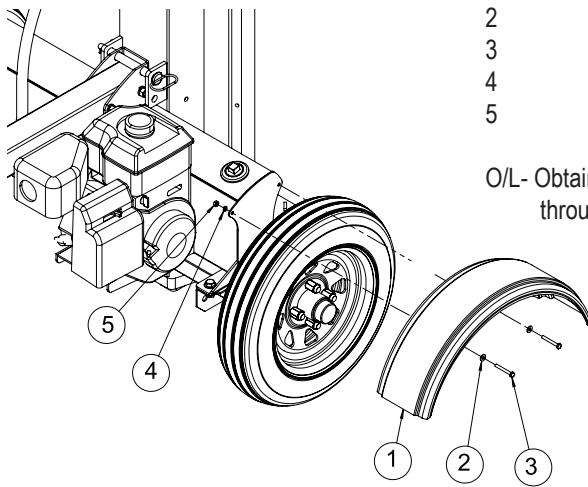
STEP 8: Remove the lid from the canister (2) holding the owner's manual to the engine side of the tongue using three 1/4" x 3/4" Grade 5 hex cap bolts (4) and three 1/4" flat washers (3).

ITEM NO.	PART NO.	DESCRIPTION	QTY.
1	-----	Canister Lid	1
2	S24087600	Manual Canister	1
3	O/L	1/4" x 3/4" GR5 Bolt	3
4	O/L	1/4" Flat Washer	3

O/L- Obtain locally. Common fasteners available through hardware and farm stores.

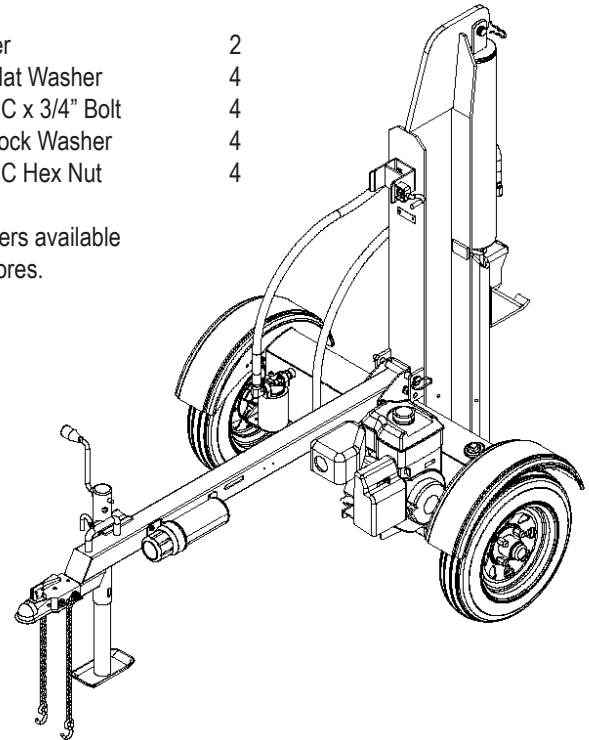


STEP 9: Attach the two fenders (1) to the tank/axle using the four 1/4" NC x 3/4" hex cap bolts (3), the four 1/4" flat washers (2), the four 1/4" lock washers (4) and the four 1/4" NC hex nuts (5). Tighten.

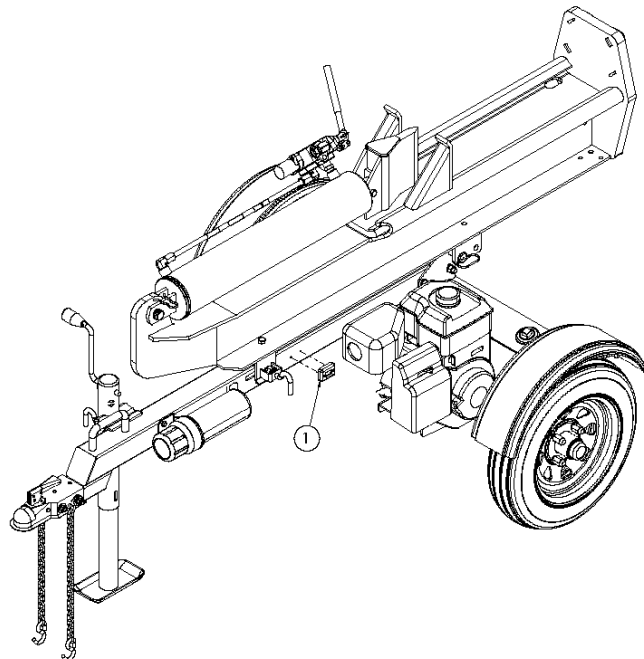


ITEM NO.	PART NO.	DESCRIPTION	QTY.
1	S40142000	Fender	2
2	O/L	1/4" Flat Washer	4
3	O/L	1/4" NC x 3/4" Bolt	4
4	O/L	1/4" Lock Washer	4
5	O/L	1/4" NC Hex Nut	4

O/L- Obtain locally. Common fasteners available through hardware and farm stores.

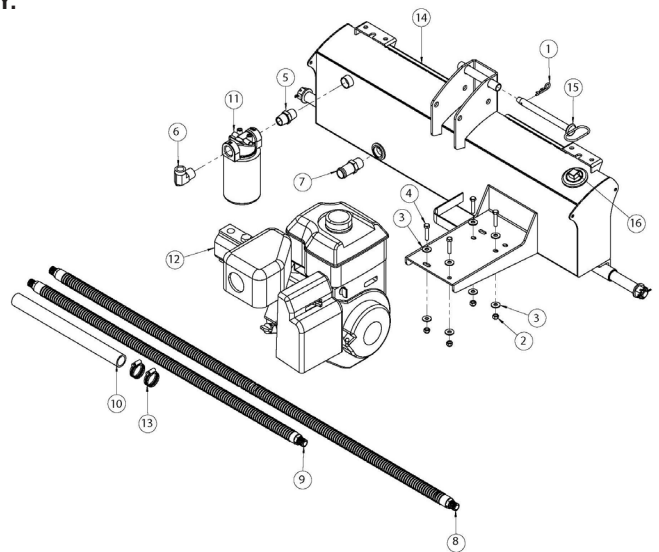


STEP 10: Attach the hour meter (1) to the tongue using the screws supplied as shown below. See the instructions in the hour meter kit for wiring and operation.



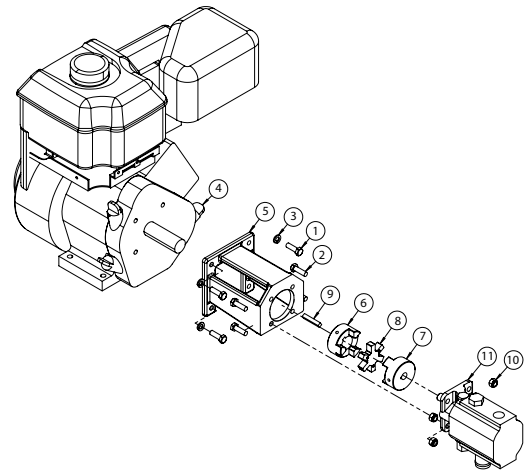
TANK ASSEMBLY BREAKDOWN

ITEM NO.	PART NO.	DESCRIPTION	QTY.
1	O/L	1/2"-3/4" R Clip Pin	1
2	O/L	5/16"-18 UNC Nylock Nut	4
3	O/L	5/16" Flat Washer	8
4	O/L	5/16" x 1-1/2" GR5 Bolt	4
5	S39034900	3/4" Hex Nipple	1
6	S39036200	Street Elbow, 1/2" Female, 3/4" Male	1
7	S39038100	Straight Fitting, 3/4" NPT to 1" Tube	1
8	S39038700	1/2" x 56" Return Hose	1
9	S39038800	1/2" x 38" Pressure Hose	1
10	S39038900	1" ID Suction Hose	1
11	S390604B0	Filter Base	1
	S390601A0	Filter Element	1
12	S390730LEA	Pump/Honda Engine Assembly	1
13	S39031600	Worm Gear Clamp	3
14	S40110300	Tank	1
15	S071022WC	Pivot Pin	1
16	S33037500	Dip Stick/Breather Cap	1



ENGINE ASSEMBLY BREAKDOWN

ITEM NO.	PART NO.	DESCRIPTION	QTY.
1	S17054400	5/16" X 1" UNF GR5 Bolt	4
2	S17053900	5/16" x 1-1/4" GR5 Bolt	4
3	S17030900	5/16" Regular Lock Washer	4
4	S39053100	8 HP Honda Engine (provided by MTA)	1
5	S40081800	Pump Mount	1
6	N/A*	Jaw Coupler, 1" Bore	1
7	N/A*	Jaw Coupler, 1/2" Bore	1
8	N/A*	Rubber Coupler Spider	1
9	S40034300	1/2" SQ. x 1-1/2" SQ. Key	1
10	S39070900	Pump, 16 GPM	1
11	S17020700	5/16"-18 UNC, Nylock	1

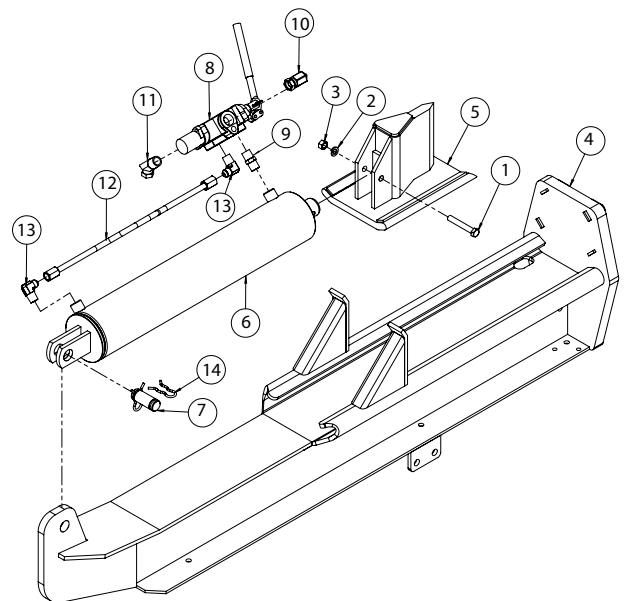


* Available as complete coupler assembly only. Order part number S400824L0. Includes item numbers 6, 7 and 8.

BEAM ASSEMBLY BREAKDOWN

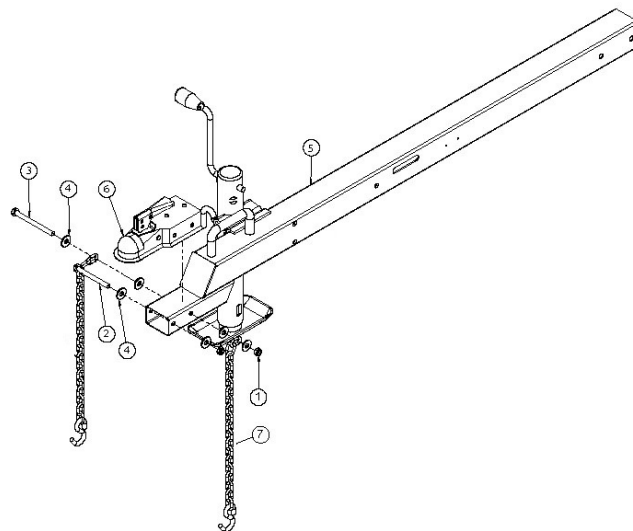
ITEM NO.	PART NO.	DESCRIPTION	QTY.
1	O/L	1/2" X 3-1/4" GR5 Bolt	1
2	O/L	1/2" Regular Lock Washer	1
3	O/L	1/2" Hex Nut	1
4	S40141300	Beam	1
5	S40141800	Wedge	1
6	S390119B0	4-1/2" x 24" Cylinder	1
7	S07073100	Cylinder Pin w/Clip	1
8	S390406SC	Auto-Return Valve	1
9	S39034300	1/2" NPT Nipple	1
10	S39039100	90° Swivel Elbow, 3/4" Male, 1/2" Female	1
11	S39039000	45° Swivel Fitting, 3/4" Male, 1/2" Female	1
12	S39034600	1/2" Steel Tubing	1
13	S39034700	1/2" Steel Tube Fitting	2
14	S07093700	Cylinder Pin Clip	2
	S40127500	Beam Lock (not shown)	1

O/L- Obtain locally. Common fasteners available through hardware and farm stores.



TONGUE ASSEMBLY BREAKDOWN

ITEM NO.	PART NO.	DESCRIPTION	QTY.
1	S17280300	M10 x 1.5 Nylock Nut	2
2	S17271600	M10 x 1.5 x 100mm GR5 Bolt	1
3	S17272000	M10 x 1.5 x 120mm GR5 Bolt	1
4	S17290800	M10 Flat Washer	6
5	S40127200	Tongue with Jack	1
6	S40034600	Hitch Ball Assembly	1
7	S40032300	Safety Chain	1



OPERATING INSTRUCTIONS



WARNING: Read and thoroughly understand all instructions and safety information before operating this log splitter. Failure to do so may cause serious injury or death. Do not allow anyone to operate this log splitter who has not read this manual. As with all power equipment, a log splitter can be dangerous if assembled or used improperly. Do not operate this log splitter if you have doubts or questions concerning safe operation. Call our customer service department at 1-800-264-0225 to address these concerns.

Si no entiende ingles, se prefiere que busque alguien que interprete las instrucciones para usted.

IMPORTANT: This log splitter comes complete with hydraulic oil and engine oil. Please follow the instructions below for filling the hydraulic tank. Refer to the Honda engine owner's manual for information on adding oil.



CAUTION: DO NOT START OR RUN THE ENGINE BEFORE ADDING OIL IN THE HYDRAULIC RESERVOIR AND OIL IN THE ENGINE.

STEP 1: The hydraulic reservoir must be filled with the oil provided. AW46 hydraulic oil is recommended when oil is needed. Automatic transmission fluid can be substituted and should be used instead of hydraulic oil when temperatures are below 32 degrees F. Use only clean oil and take care to prevent dirt from entering the hydraulic reservoir. Fill the hydraulic tank with approximately 3.5 to 4 gallons of hydraulic oil.



CAUTION: WHEN TIGHTENING THE BREATHER CAP ON THE TANK, POINT THE HOLE AWAY FROM THE ENGINE AND THE OPERATOR ZONE.

ENGINE OIL RECOMMENDATIONS

For temperatures above 40 degrees F use an SAE 30W oil. Using multigrade oil may increase oil consumption. Using SAE 30W oil below 40 degrees F will result in hard starting and possible engine bore damage. For temperatures below 40 degrees F use an SAE 10W-30 or SAE 5W-30 oil. Oil capacity is about 1.16 quart (1.1 liter).

STEP 2: After the hydraulic reservoir and the engine crankcase are filled with oil, start the engine. The hydraulic pump should prime itself. With the engine running, move the hydraulic valve lever toward the foot plate. This will cause the cylinder to extend and expel air. When the cylinder is fully extended, retract it. Repeat this procedure several times. An erratic movement of the cylinder indicates that there is still air in the system. Add about 1.0 to 1.5 gallons more. Five gallons will register just above the top fill line on the dip stick. The total capacity of the entire hydraulic system is 6.5 gallons. **NOTE:** If the tank is overfilled it will tend to expel oil from the breather cap when the cylinder is retracted. Cycle the cylinder again until it has a constant speed indicating that all air has been expelled.

STARTING INSTRUCTIONS

Refer also to the Honda Engine Operating and Maintenance Instructions manual for your log splitter.

- 1) Move the fuel valve lever to the ON position.
- 2) To start a cold engine move the choke lever to the CLOSED position. To restart a warm engine leave the choke lever in the OPEN position.
- 3) Move the throttle lever away from the MIN position, about 1/3 of the way toward the MAX position.
- 4) Turn the engine switch to the ON position.
- 5) Operate the starter (recoil starter). Pull the starter grip lightly until you feel resistance, then pull briskly. Return the starter grip gently. Do not allow the starter grip to snap back against the engine. Return it gently to prevent damage to the starter.

STOPPING THE ENGINE

To stop the engine in an emergency, simply turn the engine switch to the OFF position. Under normal conditions, use the following procedure.

- 1) Move the throttle lever to the MIN position.
- 2) Turn the engine switch to the OFF position.
- 3) Turn the fuel valve lever to the OFF position.



CAUTION: TURN FUEL SHUT OFF VALVE TO THE “OFF” POSITION PRIOR TO TOWING. FAILURE TO DO SO MAY RESULT IN FLOODING THE ENGINE.

NOTE: The engine maximum governed speed is preset at the factory at 3600 RPM no load speed. When splitting wood the throttle should be set at the maximum speed to develop the horsepower required for the pump.

OPERATION



WARNING: See safety information related to operation of the log splitter on page 3 and 4 of this manual. Make sure that you have the recommended personal protective equipment described on page 1.

- 1) Set up the log splitter in a clear, level area and block the wheels. Make sure that the suction port on the tank is always on the lower side of the log splitter.
- 2) For horizontal operation place a log on the beam against the foot plate. Make sure the log is securely on the foot plate and up against the beam. To split wood in the vertical position, release the pin on the beam latch located near the front end of the beam. Carefully tilt the beam up until the foot plate is sitting squarely on the ground and the log splitter is stable. Place the log on the foot plate up against the beam. When the beam is returned to the horizontal position make sure the beam latch is securely locked down. See illustrations of beam latch in Step 7 on page 10.
- 3) With the engine running, depress the valve handle so that the cylinder will drive the wedge into the log. Extend the cylinder until the log splits or to the end of its stroke. If the log has not completely split after the cylinder has reached the end of its extension, retract the cylinder.

IMPORTANT: Leaving the valve in the “actuate” position at the end of the stroke may damage the pump. Always use extra care when splitting logs with unsquare ends.

NOTE: For operation in wooded areas, obtain a spark arrestor for the exhaust system. See the engine operating and maintenance manual and check with your authorized Honda service center. See also Fire Prevention on page 5 of this manual.

IMPORTANT: TO EXTEND THE LIFE OF THE HYDRAULIC CYLINDER, AVOID “BOTTOMING OUT” WEDGE PLATE TO THE FOOT PIECE. TO CONFORM WITH INDUSTRY SAFETY RECOMMENDATIONS, THE WEDGE STOPS 1.5 INCHES FROM THE END OF THE STROKE.

TOWING

This log splitter is equipped with pneumatic tires, a Class I coupler (2 in. diameter ball required) and safety chains. Before towing, the safety chains must be secured to the hitch or bumper of the vehicle. Local regulations should be checked regarding licensing, lights, towing, etc. Turn fuel shut off valve on the engine to the “Off” position prior to towing. Failure to do so may result in flooding the engine. If you have the brake light kit, attach the pigtail to the tow vehicle’s wiring harness. Make sure that the lights are visible and functioning prior to towing. The instructions for mounting the lights are in the light kit box. Do not exceed 45 mph when towing this log splitter. See also Towing Safety on page 6 of this manual.

MAINTENANCE

- 1) Consult the operating and maintenance instructions of the engine manufacturer for engine care and maintenance.
- 2) Always check the oil level of the hydraulic reservoir before operation. Operating the log splitter without an adequate oil supply will cause severe damage to the pump.
- 3) Change the oil filter after the first 25 hours of operation. There after change the oil filter every 100 hours or seasonally, whichever comes first.
- 4) To drain the hydraulic oil, loosen the clamp on the hose coming from the fitting on the bottom of the tank. It is located just to the right of the oil filter.
- 5) If the wedge becomes dull or nicked, it can be removed and sharpened. Remove the 1/2 in. diameter bolt that connects the wedge to the cylinder. The hose from the valve may need to be removed. Carefully lift the cylinder to allow the wedge to slide forward. The wedge can now be lifted off and sharpened.
- 6) Clean the breather cap after 25 hours of operation. Clean it more often when operated in dusty conditions. To clean, remove the breather cap from the tank and flush with kerosene or liquid detergent to remove the dirt.
- 7) See also Repair and Maintenance Safety on page 4 of this manual.
- 8) All replacement parts must meet manufacturer's specifications.

IMPORTANT NOTICE

We, the manufacturer, reserve the right to change the product and/or specifications in this manual without notification. The manual is for information usage only and the pictures and drawings depicted herein are for reference only.

== NOTES ==

Model No. _____

Serial No. _____

Date of Purchase _____

Place of Purchase _____

SPECIFICATIONS

	MODEL NO. 401628MTA
MAXIMUM SPLITTING FORCE	28 Tons
ENGINE	Honda 240cc Commercial Horizontal Engine
CYLINDER	4-1/2" Diameter X 24" Stroke
VALVE	Auto-Return
PUMP	Two-Stage 16 gpm
MAXIMUM LOG LENGTH	26"
CYCLE TIME *	11 Seconds
WHEELS	4.80 x 12"
WEDGE	7" High with Spreader Wings
BEAM SIZE	8" x 10"
TOTAL HYDRAULIC CAPACITY	6.5 Gallons Maximum
FILTER	Spin-On Replaceable
HEIGHT	72" in Vertical Position 44" in Horizontal Position
LENGTH	88"
WIDTH	49"
SHIPPING WEIGHT	675 lbs.
* Ideal case cycle time. Actual cycle time will vary depending on temperature, altitude, engine speed, pump efficiency, etc.	



555 Hickory Hills Blvd.
Whites Creek, TN 37189
1-800-264-0225