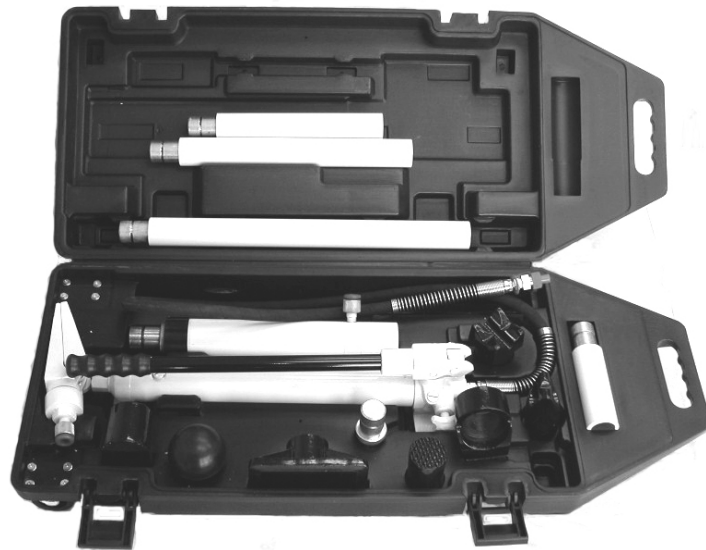




Operating Instructions and Parts Manual BRK-4T & 10T Body Repair Kits



WMH TOOL GROUP, Inc.

2420 Vantage Drive
Elgin, Illinois 60124
Ph.: 800-274-6848
www.wmhtoolgroup.com

Part No. M-680014

Revision B 02/08

Copyright © 2008 WMH Tool Group, Inc.

Warranty and Service

WMH Tool Group, Inc. warrants every product it sells. If one of our tools needs service or repair, one of our Authorized Service Centers located throughout the United States can give you quick service. In most cases, any of these WMH Tool Group Authorized Service Centers can authorize warranty repair, assist you in obtaining parts, or perform routine maintenance and major repair on your JET® tools. For the name of an Authorized Service Center in your area call 1-800-274-6848.

MORE INFORMATION

WMH Tool Group is consistently adding new products to the line. For complete, up-to-date product information, check with your local WMH Tool Group distributor, or visit jettools.com.

WARRANTY

JET products carry a limited warranty which varies in duration based upon the product. (MW = Metalworking, WW = Woodworking)

90 DAY WARRANTY	1 YEAR WARRANTY	2 YEAR WARRANTY	5 YEAR WARRANTY	LIFE LIFETIME WARRANTY
Lathe Accessories Machine Accessories Mobile Bases Safety Equipment Specialty Items Vise Accessories	Air Tools- Contractor Air Tools-Industrial Air Tools-Light Industrial Lubrication	Body Repair Kits Bottle Jacks Cable Pullers Cold Saws Hoists-Air Hoists-Electric Metalforming Mill/Drills Milling Machines	MW Bandsaws MW Drill Presses MW Finishing Equipment MW Lathes MW Precision Vises Pallet Trucks	Rigging Equip. Service Jacks Stackers Surface Grinders Tapping Trolleys-Air Trolleys-Electric Web Slings Winches-Electric
				Warranty reverts to 1 Year Warranty if woodworking (WW) products listed below are used for commercial, industrial or educational purposes
		Trolleys-Geared Trolleys-Plain Winches-Manual Manual WW Air Filtration WW Bandsaws WW Buffers WW Drill Presses WW Dust Collectors	WW Dust Filters WW Dust Fittings WW Joints WW Lathes WW Planers WW Sanders WW Shapers WW Tablesaws	Fastening Tools Mechanics Hand Tools Striking Tools Vises (non-precision) Clamps

WHAT IS COVERED?

This warranty covers any defects in workmanship or materials subject to the exceptions stated below. Cutting tools, abrasives and other consumables are excluded from warranty coverage.

WHO IS COVERED?

This warranty covers only the initial purchaser of the product.

WHAT IS THE PERIOD OF COVERAGE?

The general JET warranty lasts for the time period specified in the product literature of each product.

WHAT IS NOT COVERED?

Five Year Warranties do not cover woodworking (WW) products used for commercial, industrial or educational purposes. Woodworking products with Five Year Warranties that are used for commercial, industrial or education purposes revert to a One Year Warranty. This warranty does not cover defects due directly or indirectly to misuse, abuse, negligence or accidents, normal wear-and-tear, improper repair or alterations, or lack of maintenance.

HOW TO GET SERVICE

The product or part must be returned for examination, postage prepaid, to a location designated by us. For the name of the location nearest you, please call 1-800-274-6848.

You must provide proof of initial purchase date and an explanation of the complaint must accompany the merchandise. If our inspection discloses a defect, we will repair or replace the product, or refund the purchase price, at our option.

We will return the repaired product or replacement at our expense unless it is determined by us that there is no defect, or that the defect resulted from causes not within the scope of our warranty in which case we will, at your direction, dispose of or return the product. In the event you choose to have the product returned, you will be responsible for the shipping and handling costs of the return.

HOW STATE LAW APPLIES

This warranty gives you specific legal rights; you may also have other rights which vary from state to state.

LIMITATIONS ON THIS WARRANTY

WMH TOOL GROUP LIMITS ALL IMPLIED WARRANTIES TO THE PERIOD OF THE LIMITED WARRANTY FOR EACH PRODUCT. EXCEPT AS STATED HEREIN, ANY IMPLIED WARRANTIES OR MERCHANTABILITY AND FITNESS ARE EXCLUDED. SOME STATES DO NOT ALLOW LIMITATIONS ON HOW LONG THE IMPLIED WARRANTY LASTS, SO THE ABOVE LIMITATION MAY NOT APPLY TO YOU.

WMH TOOL GROUP SHALL IN NO EVENT BE LIABLE FOR DEATH, INJURIES TO PERSONS OR PROPERTY, OR FOR INCIDENTAL, CONTINGENT, SPECIAL, OR CONSEQUENTIAL DAMAGES ARISING FROM THE USE OF OUR PRODUCTS. SOME STATES DO NOT ALLOW THE EXCLUSION OR LIMITATION OF INCIDENTAL OR CONSEQUENTIAL DAMAGES, SO THE ABOVE LIMITATION OR EXCLUSION MAY NOT APPLY TO YOU.

WMH Tool Group sells through distributors only. The specifications in WMH catalogs are given as general information and are not binding. Members of WMH Tool Group reserve the right to effect at any time, without prior notice, those alterations to parts, fittings, and accessory equipment which they may deem necessary for any reason whatsoever. JET® branded products are not sold in Canada by WMH Tool Group.

Warnings

- **Read and understand the entire contents of this manual before attempting to use the body repair kit.**
 - **This body repair kit is designed and intended for use by properly trained and experienced personnel only. If you are not familiar with the proper and safe use of a body repair kit, do not use until proper training and knowledge has been obtained.**
 - **Failure to comply with all of these warnings may cause serious injury.**
1. Do not exceed the maximum load capacity of the ram.
 2. Use only on hard level surfaces capable of sustaining the load.
 3. Do not open oil filler screw unless ram is fully retracted and pressure is released.
 4. Do not use as a vehicle lifting device, or as a vehicle support.
 5. When extension tubes and/or offset attachments are used, the rated capacity is reduced by 50% for each tube or attachment connected.
 6. Make sure all attachments are fully engaged before applying load or pressure.
 7. If bowing or bending of ram or any attachment occurs during use, **STOP**, release pressure immediately and reconsider application. Application may not be compatible with product, a ram kit with a higher rated capacity may be required.
 8. Do not over extend the ram, as it is possible to force the plunger out of the top of the ram.
 9. When coupler valves are disconnected, insert dust cap to keep the oil lines clean.
 10. Monitor pressure and load at all times.
 11. Make sure the load is centrally applied to attachment or ram saddle. Do not load off center.
 12. Control the load. Dropping the load may cause the threads to shear and lose the load. Failure to comply may result in serious injury or death.
 13. Do not drop any heavy objects onto the hose, and do not allow the hose to kink.
 14. Allow clearance for the hose to avoid damage to the hose and couplers.
 15. Keep equipment away from heat or fire, as this may damage or weaken the equipment.
 16. Wear approved safety glasses/face shields while using this machine.
 17. Keep the floor around the body repair kit clean and free of scrap material, oil, and grease.
 18. Do not over reach. Maintain a balanced stance at all times.
 19. Use the right tool. Do not force a tool or attachment to do a job which it was not designed for.
 20. Replace warning labels if they become obscured or removed.
 21. Give your work undivided attention. Looking around, carrying on a conversation, and “horse-play” are careless acts that can result in serious injury.
 22. Keep visitors a safe distance from the work area.
 23. Use recommended accessories. Improper accessories may be hazardous.
 24. Some dust created by power sanding, sawing, grinding, drilling, and other construction activities contains chemicals known to cause cancer, birth defects or other reproductive harm. Some examples of these chemicals are:
 - Lead from lead based paint
 - Crystalline silica from bricks and cement and other masonry products, and
 - Arsenic and chromium from chemically-treated lumber.Your risk from those exposures varies, depending on how often you do this type of work. To reduce your exposure to these chemicals: work in a well ventilated area, and work with approved safety equipment, such as those dust masks that are specifically designed to filter out microscopic particles.
 25. Do not operate tool while under the influence of drugs, alcohol or any medication.

Specifications

	BRK-4T	BRK-10T
Stock Number	680014	680110
Pump Capacity (ton)	4	10
Maximum Handle Effort (lbs).....	160	93
Oil Capacity (cu in).....	16.5	31.7
Pump Piston Diameter (in).....	0.47	0.47
Piston Stroke (in).....	1	1.5
Overall Stroke (in)	4	6
Minimum & Maximum Height (in).....	10.6/14.5	14.8/20.7
Maximum Cylinder Pressure (psi).....	10,000	10,000
Net Weight (lbs)	45	88

Table of Contents

	Page
Warranty and Service.....	2
Safety Warnings.....	3
Specifications	4
Table of Contents	4
Features	4
Contents of Shipping Container	5
Before Operating	6
Fluid Maintenance.....	6
Operation.....	6
Storage.....	6
Troubleshooting	7
Part's Lists and Breakdowns.....	8-15
BRK Test Certificate.....	16

Features

- Quick connect design allows assembly in seconds.
- Automatic safety overload system protects equipment.
- Heavy wall extension tubes for tough jobs.
- Proof tested and certified to meet ASME B30.1 standards.
- New two stage piston for quick action with BRK-10T.
- BRK-10T features wheels for transportation ease.

The specifications in this manual are given as general information and are not binding. JET reserves the right to effect, at any time and without prior notice, changes or alterations to parts, fittings, and accessory equipment deemed necessary for any reason whatsoever.

Contents of Shipping Container

BRK-4T

- 1 Storage Case
- 1 17-1/4" Extension Tube
- 1 13-1/4" Extension Tube
- 1 9-1/4" Extension Tube
- 1 5-1/2" Extension Tube
- 1 Serrated Head
- 1 Spreading Wedge
- 1 Rubber Head
- 1 Flat Base
- 1 Ram Toe
- 1 Plunger Toe
- 1 Wedge Head
- 1 Combination Head
- 1 Male Connector
- 1 4 Ton Pump Assembly
- 1 4 Ton Ram Assembly
- 1 6' Hydraulic Hose w/Coupling
- 1 Owner's Manual
- 1 Warranty Card



BRK-10T

- 1 Storage Case with Wheels
- 1 20-1/2" Extension Tube
- 1 15-3/4" Extension Tube
- 1 11-3/4" Extension Tube
- 1 6-3/4" Extension Tube
- 1 Serrated Head
- 1 Spreading Wedge
- 1 Rubber Head
- 1 Flat Base
- 1 Ram Toe
- 1 Plunger Toe
- 1 Wedge Head
- 1 Combination Head
- 1 Male Connector
- 1 10 Ton Pump Assembly
- 1 10 Ton Ram Assembly
- 1 6' Hydraulic Hose w/Coupling
- 1 Owner's Manual
- 1 Warranty Card



Before Operating

1. Inspect the unit for evidence of fluid leaks, damaged hydraulic fittings, or other damage such as bent, broken, or missing parts. Fix or replace as needed before operating.
2. Check the fluid level.

Place the pump unit on a level surface. Use a flat blade screwdriver to remove the oil-fill screw and seal from the top of the pump cylinder (A, Fig. 1).

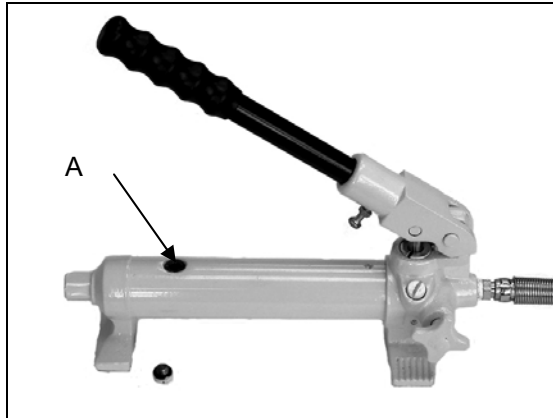


Fig. 1

If the fluid is below the metal rod inside the pump, add enough good-quality hydraulic fluid to just cover the rod. Do not overfill.

Replace the seal and tighten the screw.

⚠WARNING Use only good-quality hydraulic fluid. Improper fluid can cause premature failure of the jack, and the potential for sudden and immediate loss of load. Failure to comply may cause serious injury!

Fluid Maintenance

On a yearly basis, drain and refill the hydraulic fluid for optimum performance.

1. To drain, open the release valve. Remove the screw and seal. Invert the pump and drain the fluid in to a suitable container. Do not let dirt get into the system.
2. Refill with good-quality hydraulic fluid.

IMPORTANT! Dispose of hydraulic fluid in accordance with local regulations. Avoid mixing different types of fluid, and NEVER use brake fluid, transmission fluid, motor oil, or glycerin.

Operation

The pump can be used in a vertical or horizontal position. Always keep the hose end of the pump unit facing down when using in the vertical position.

1. Connect the hydraulic pump hose to the hydraulic ram. Tighten the connection firmly prior to pumping.
2. Close release valve (B, Fig. 2) by turning it clockwise. Do not over tighten.

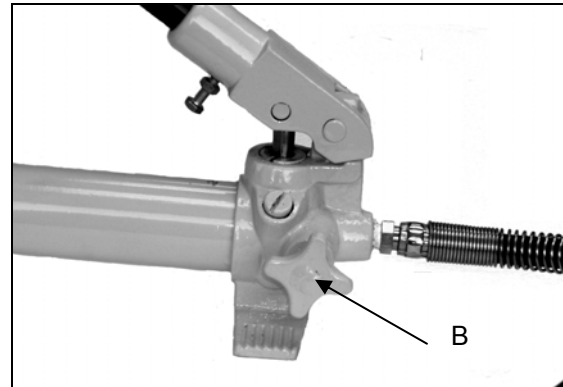


Fig. 2

3. Pump the handle until the ram reaches the desired distance or pressure required.
4. Release the pressure by turning the release valve counter-clockwise.

Storage

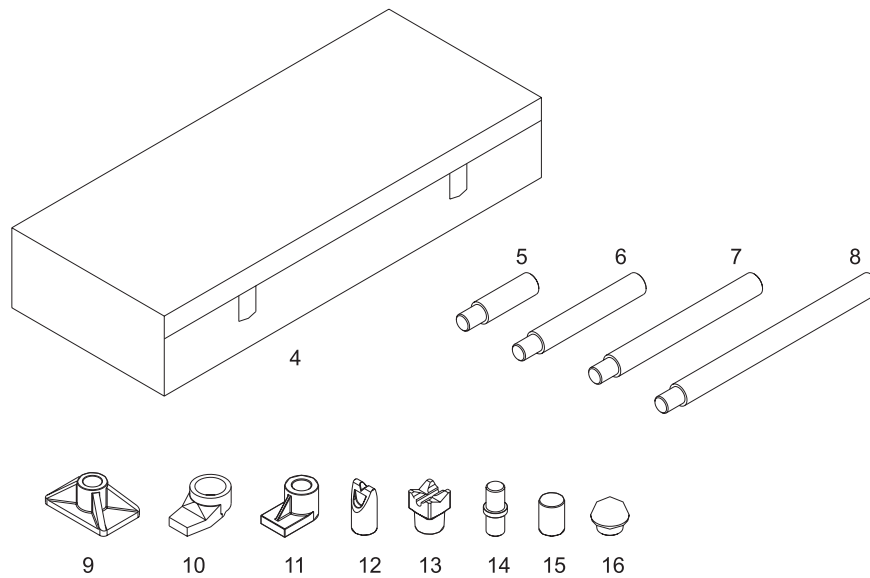
1. Make sure the release valve on the pump unit is open and the ram is in the retracted position when not in use.
2. Keep parts and attachments in the case when not in use.

Troubleshooting

Trouble	Probable Cause	Remedy
Pump unit will not work	<ol style="list-style-type: none"> 1. Release valve is open 2. Dirt on valve seats 3. Worn seals 	<ol style="list-style-type: none"> 1. Close the release valve 2. Clean valve seats 3. Replace seals
Pump unit will not produce pressure	<ol style="list-style-type: none"> 1. The reservoir could be overfilled or low on hydraulic fluid 2. Leak in the hose, seals, or connections 3. Air trapped in the system 	<ol style="list-style-type: none"> 1. Check the fluid level. Add or remove hydraulic fluid until the rod inside the reservoir is covered with fluid. Do not overfill. 2. Check the hose and replace if necessary. Make sure all connections are tight. Replace seals if needed. 3. Open the release valve. Pump the handle a couple of full strokes. Close the release valve.
Pump unit will not lower completely	<ol style="list-style-type: none"> 1. Air trapped in the system 2. The reservoir could be overfilled or low on hydraulic fluid 	<ol style="list-style-type: none"> 1. Open the release valve. Pump the handle a couple of full strokes. Close the release. 2. Add or remove hydraulic fluid to just cover the rod inside the reservoir with fluid. Do not overfill.
Ram will not fully extend	Low on hydraulic fluid	Add hydraulic fluid
Fluid leaking from release valve	Worn O-ring	Replace O-ring
Fluid leaking from hose	Damaged hose	Replace hose
Fluid leaking around hydraulic ram piston	Worn seal or piston	Replace seal or piston

Parts Lists and Breakdowns

BRK-4T and 10T Attachments



BRK-4T Attachments

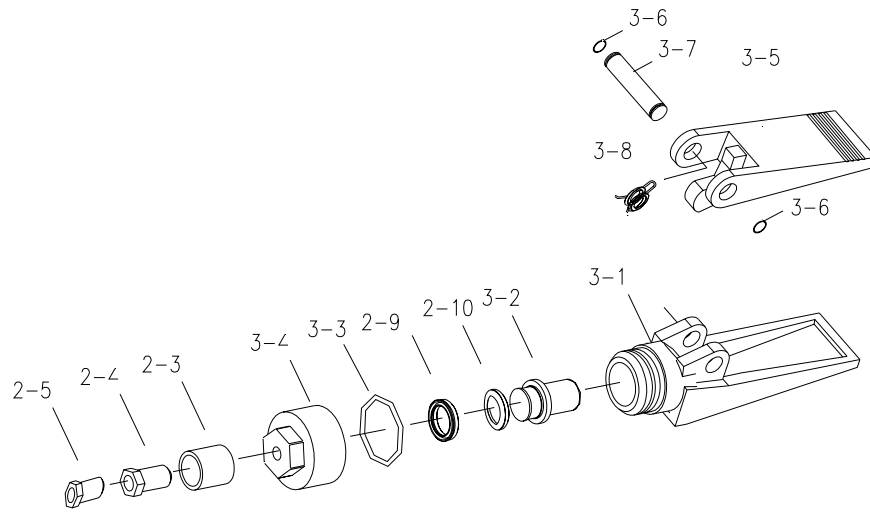
Index No.	Part No.	Description	Size	Qty.
4	BRK4T-4	Molded Case		1
5	BRK4T-5	Extension Tube A	5-1/2"	1
6	BRK4T-6	Extension Tube B	9-1/4"	1
7	BRK4T-7	Extension Tube C	13-1/4"	1
8	BRK4T-8	Extension Tube D	17-1/4"	1
9	BRK4T-9	Flat Base		1
10	BRK4T-10	Ram Toe		1
11	BRK4T-11	Plunger Toe		1
12	BRK4T-12	Wedge Head		1
13	BRK4T-13	Combination Head		1
14	BRK4T-14	Male Connector		1
15	BRK4T-15	Serrated Head	1-3/8"	1
16	BRK4T-16	Rubber Head	2-1/4"	1

BRK-10A Attachments

4	BRK10T-4	Molded Case		1
5	BRK10T-5	Extension Tube A	6-3/4"	1
6	BRK10T-6	Extension Tube B	11-3/4"	1
7	BRK10T-7	Extension Tube C	15-3/4"	1
8	BRK10T-8	Extension Tube D	20-1/2"	1
9	BRK10T-9	Flat Base		1
10	BRK10T-10	Ram Toe		1
11	BRK10T-11	Plunger Toe		1
12	BRK10T-12	Wedge Head		1
13	BRK10T-13	Combination Head		1
14	BRK10T-14	Male Connector		1
15	BRK10T-15	Serrated Head	2"	1
16	BRK10T-16	Rubber Head	3"	1

1/2 Ton Hydraulic Spreader Assembly

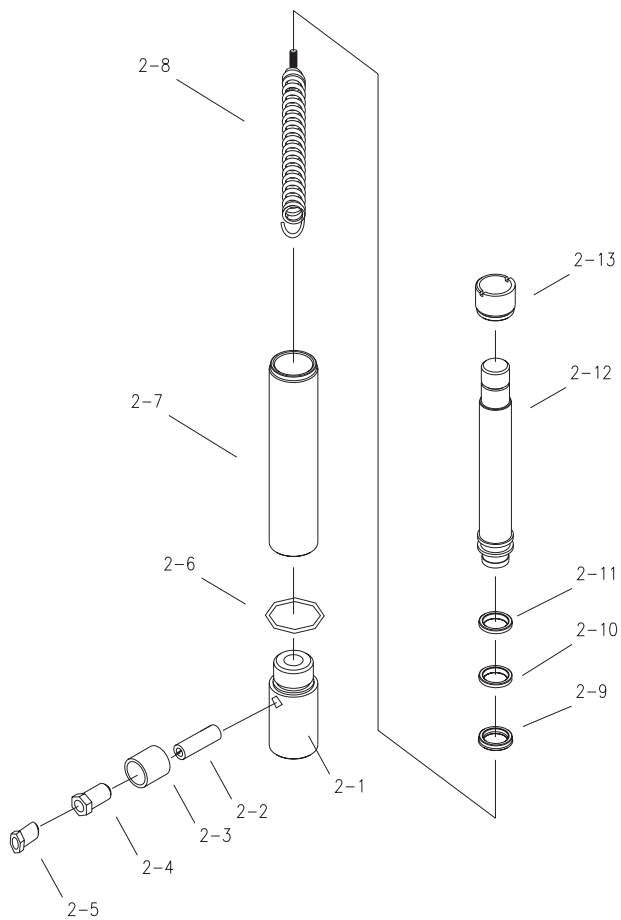
BRK-4T and BRK-10T



Index No.	Part No.	Description	Size	Qty.
2-5		Dustproof Plug		1
2-4	BRK4T-2-4	Coupler Set (Index #2-3, 2-4, 2-5)	1/4"	1
2-3		Coupling Ring		1
3-4	BRK4T-3-4	End Cap		1
3-3	BRK4T-3-3	O-Ring	32x3.55 mm	1
2-9	BRK4T-2-9	Seal	28x6 mm	1
2-10	BRK4T-2-10	Nylon Gasket		1
3-2	BRK4T-3-2	Piston		1
3-1	BRK4T-3-1	Lower Spreader		1
3-5	BRK4T-3-5	Upper Spreader		1
3-6	BRK4T-3-6	Snap Ring	12 mm	2
3-7	BRK4T-3-7	Pivot Pin		1
3-8	BRK4T-3-8	Torsion Spring		1
	RPK-BRKHSA	Repair Kit (Includes Index #3-3, 2-9, 2-10)		

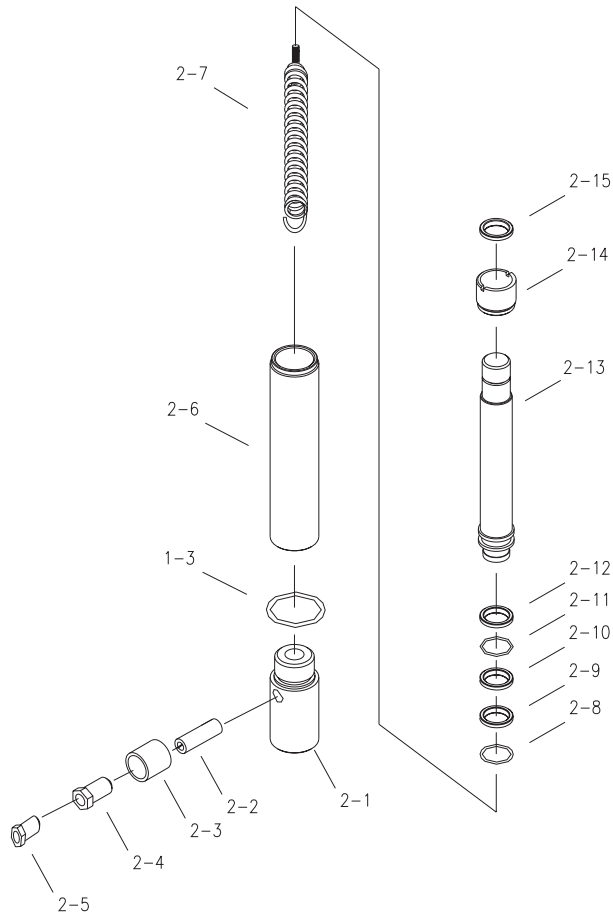
BRK-4T Hydraulic Ram Assembly

Index No.	Part No.	Description	Size	Qty.
2-1	BRK4T-2-1	Cylinder Base		1
2-2	BRK4T-2-2	Pin	8x20	1
2-3		Coupling Ring		1
2-4	BRK4T-2-4	Coupler Set (Index #2-3, 2-4, 2-5)	1/4"	1
2-5		Dustproof Plug		1
2-6	BRK4T-2-6	O-Ring	25x3.55 mm	1
2-7	BRK4T-2-7	Cylinder Tube		1
2-8	BRK4T-2-8	Spring		1
2-9	BRK4T-2-9	Seal	28x6 mm	1
2-10	BRK4T-2-10	Nylon Gasket		1
2-11	BRK4T-2-11	Piston Ring		1
2-12	BRK4T-2-12	Ram		1
2-13	BRK4T-2-13	Bushing		1
	RPK-BRK4THRA	Repair Kit (Includes Index #2-6, 2-9, 2-10)		



BRK-10T Hydraulic Ram Assembly

Index No.	Part No.	Description	Size	Qty.
1-3	BRK4T-1-3	O-Ring	40x3.55 mm	1
2-1	BRK10T-2-1	Cylinder Base		1
2-2	BRK10T-2-2	Pin	8x35 mm	1
2-3		Coupling Ring		1
2-4	BRK4T-2-4	Coupler Set (Index #2-3, 2-4, 2-5)	1/4"	1
2-5		Dustproof Plug		1
2-6	BRK10T-2-6	Cylinder Tube		1
2-7	BRK10T-2-7	Spring		1
2-8	BRK10T-2-8	Snap Ring	28 mm	1
2-9	BRK10T-2-9	Seal		1
2-10	BRK10T-2-10	Piston Ring		1
2-11	BRK10T-2-11	Seal	45x6 mm	1
2-12	BRK10T-2-12	Nylon Gasket	45x4 mm	1
2-13	BRK10T-2-13	Ram		1
2-14	BRK10T-2-14	Bushing		1
2-15	BRK10T-2-15	Bushing		1
.....RPK-BRK10THRA		Repair Kit (Includes Index #1-3, 2-11, 2-12)		

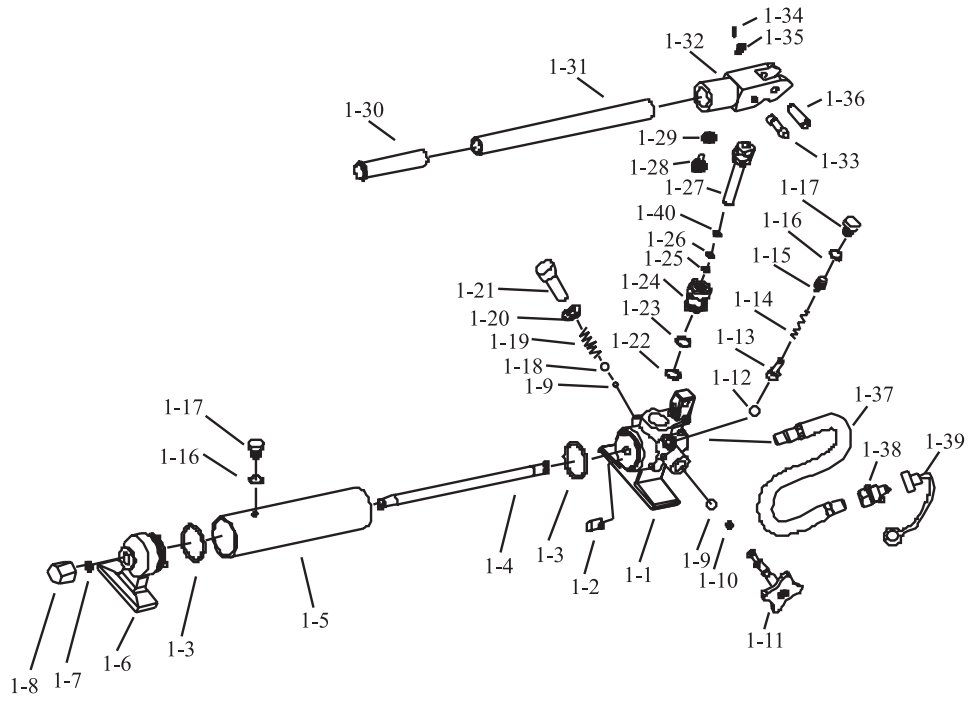


BRK-4T Hydraulic Pump Assembly

Index No.	Part No.	Description	Size	Qty.
1-1	BRK4T-1-1	Valve Block		1
1-2	BRK4T-1-2	Filter		1
1-3	BRK4T-1-3	O-Ring	40x3.55 mm	2
1-4	BRK4T-1-4	Rod Joint		1
1-5	BRK4T-1-5	Oil Reservoir		1
1-6	BRK4T-1-6	Supporting Block		1
1-7	BRK4T-1-7	O-Ring	14x2.65 mm	1
1-8	BRK4T-1-8	Hex Nut		1
1-9	BRK4T-1-9	Steel Ball	6 mm	2
1-10	BRK4T-1-10	O-Ring	7.1x2.65 mm	1
1-11	BRK4T-1-11	Release Valve Rod		1
1-12	BRK4T-1-12	Steel Ball	4 mm	1
1-13	BRK4T-1-13	Ball Seat		1
1-14	BRK4T-1-14	Safety Valve Spring		1
1-15	BRK4T-1-15	Adjust Screw		1
1-16	BRK4T-1-16	Seal		2
1-17	BRK4T-1-17	Bolt		2
1-18	BRK4T-1-18	Steel Ball	8 mm	1
1-19	BRK4T-1-19	Spring		1
1-20	BRK4T-1-20	Copper Washer		1
1-21	BRK4T-1-21	Bolt	10x16 mm	1
1-22	BRK4T-1-22	O-Ring	19x2.65 mm	1
1-23	BRK4T-1-23	Nylon Gasket	24x2 mm	1
1-24	BRK4T-1-24	Cylinder Pump		1
1-25	BRK4T-1-25	O-Ring	12x2.65 mm	1
1-26	BRK4T-1-26	Nylon Gasket	12x2 mm	1
1-27	BRK4T-1-27	Pump Plunger		1
1-28	BRK4T-1-28	Hex Bolt	6x25 mm	1
1-29	BRK4T-1-29	Nut	6 mm	1
1-30	BRK4T-1-30	Grip		1
1-31	BRK4T-1-31	Handle		1
1-32	BRK4T-1-32	Handle Socket		1
1-33	BRK4T-1-33	Pin		1
1-34	BRK4T-1-34	Clip		1
1-35	BRK4T-1-35	Flat Washer	10 mm	1
1-36	BRK4T-1-36	Pin		1
1-37	BRK4T-1-37	Hose		1
1-38	BRK4T-1-38	Coupler		1
1-39	BRK4T-1-39	Dustproof Plug		1
1-40	BRK4T-1-40	Seal	12x6 mm	1

...RPK-BRKHPA ..Repair Kit (Includes Index #1-3, 1-7, 1-10, 1-16, 1-20, 1-22, 1-23, 1-25, 1-26, 1-40)

BRK-4T Hydraulic Pump Breakdown

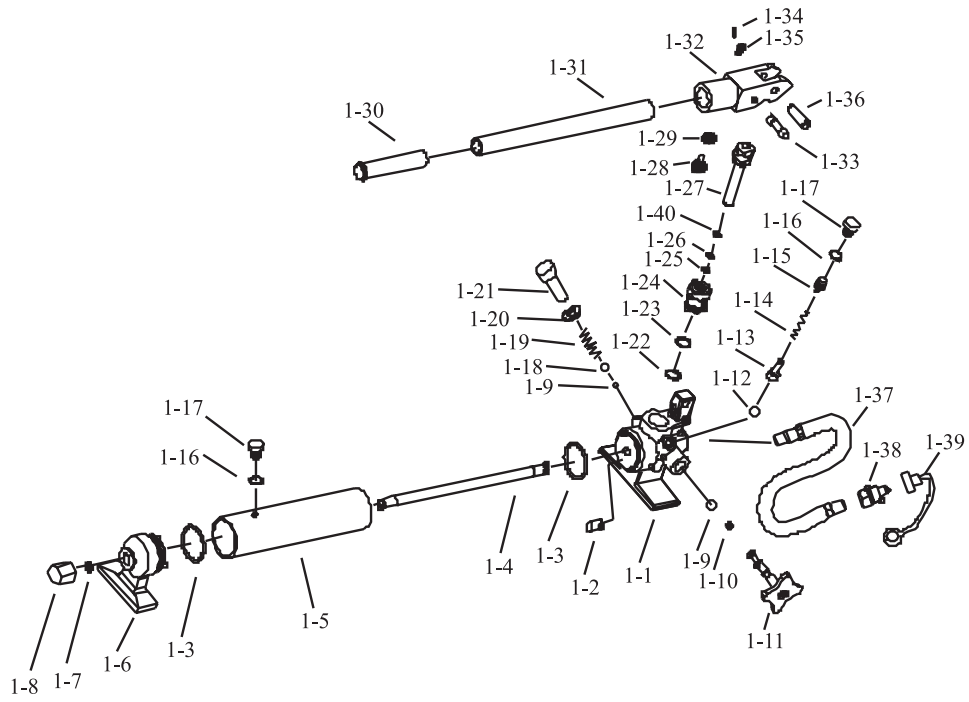


BRK-10T Hydraulic Pump Assembly

Index No.	Part No.	Description	Size	Qty.
1-1	BRK4T-1-1	Valve Block		1
1-2	BRK4T-1-2	Filter		1
1-3	BRK4T-1-3	O-Ring	40x3.55 mm	2
1-4	BRK10T-1-4	Rod Joint		1
1-5	BRK10T-1-5	Oil Reservoir		1
1-6	BRK4T-1-6	Supporting Block		1
1-7	BRK4T-1-7	O-Ring	14x2.65 mm	1
1-8	BRK4T-1-8	Hex Nut		1
1-9	BRK4T-1-9	Steel Ball	6 mm	2
1-10	BRK4T-1-10	O-Ring	7.1x2.65 mm	1
1-11	BRK4T-1-11	Release Valve Rod		1
1-12	BRK4T-1-12	Steel Ball	4 mm	1
1-13	BRK4T-1-13	Ball Seat		1
1-14	BRK4T-1-14	Safety Valve Spring		1
1-15	BRK4T-1-15	Adjust Screw		1
1-16	BRK4T-1-16	Seal		2
1-17	BRK4T-1-17	Bolt		2
1-18	BRK4T-1-18	Steel Ball	8 mm	1
1-19	BRK4T-1-19	Spring		1
1-20	BRK4T-1-20	Copper Washer		1
1-21	BRK4T-1-21	Bolt	10x16mm	1
1-22	BRK4T-1-22	O-Ring	19x2.65 mm	1
1-23	BRK4T-1-23	Nylon Gasket	24x2 mm	1
1-24	BRK4T-1-24	Cylinder Pump		1
1-25	BRK4T-1-25	O-Ring	12x2.65 mm	1
1-26	BRK4T-1-26	Nylon Gasket	12x2 mm	1
1-27	BRK4T-1-27	Pump Plunger		1
1-28	BRK4T-1-28	Hex Bolt	6x25 mm	1
1-29	BRK4T-1-29	Nut	6 mm	1
1-30	BRK4T-1-30	Grip		1
1-31	BRK10T-1-31	Handle		1
1-32	BRK4T-1-32	Handle Socket		1
1-33	BRK4T-1-33	Pin		1
1-34	BRK4T-1-34	Clip		1
1-35	BRK4T-1-35	Flat Washer	10 mm	1
1-36	BRK4T-1-36	Pin		1
1-37	BRK4T-1-37	Hose		1
1-38	BRK4T-1-38	Coupler		1
1-39	BRK4T-1-39	Dustproof Plug		1
1-40	BRK4T-1-40	Seal	12x6 mm	1

...RPK-BRKHPA ..Repair Kit (Includes Index #1-3, 1-7, 1-10, 1-16, 1-20, 1-22, 1-23, 1-25, 1-26, 1-40)

BRK-10T Hydraulic Pump Breakdown





TEST CERTIFICATE

COMMODITY	Body Repair Kit
MODEL	BRK-4T & 10T
SERIAL NO.	
CAPACITY	ton
TEST LOAD	ton
LIFT	ft.
DATE OF INSPECTION	
JUDGEMENT	PASSED
INSPECTOR	

Compliance: ANSI B30.1

